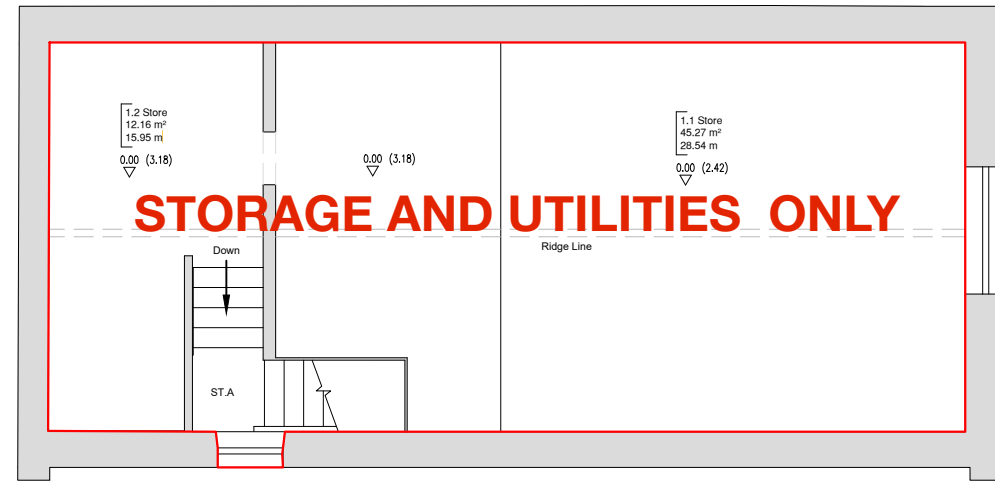
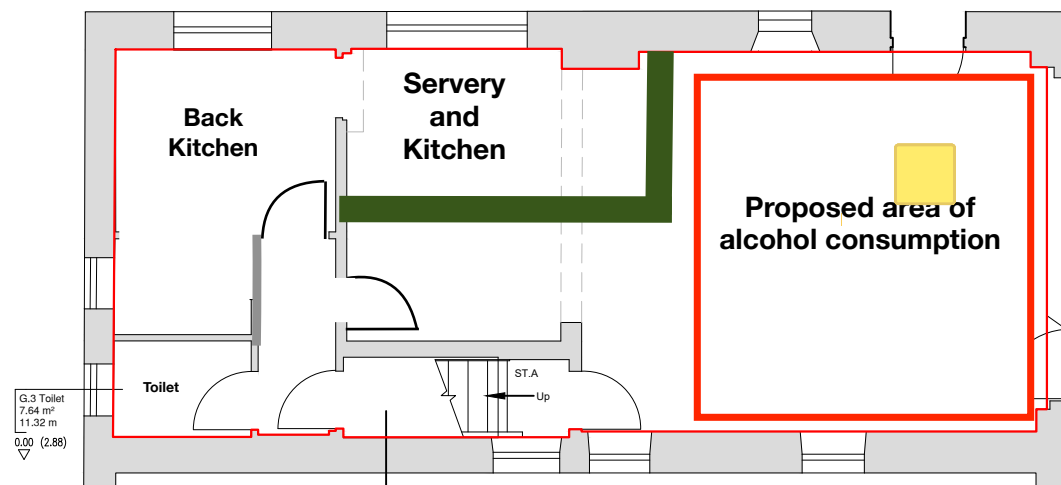


Drawing number

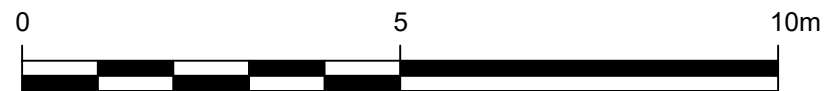
LEASE-F247-SP-IO



First Floor



Ground Floor



1:100

Project

LEASE - Estates Lease Plans

Title

Clock Tower Office  
Pedler on the Port  
Lease Plan

Drawing Number

LEASE-F247-SP-IO

Rev

Rev	Revision Date	Purpose of revision	Drawn	Checked	Approved

Asset Number

DHB.1500.083A

Pseudo Grid Reference (If Applicable)

Scale

1:100 @ A3

Drawn By

JP

Drawn Date

10.05.2022

Checked By

MB

Checked Date

10.05.2022

Approved By

TR

Approved Date

10.05.2022



Harbour House  
Marine Parade  
Dover  
Kent  
CT17 9BU  
Tel +44(0)1304 240400  
Website www.doverport.co.uk