

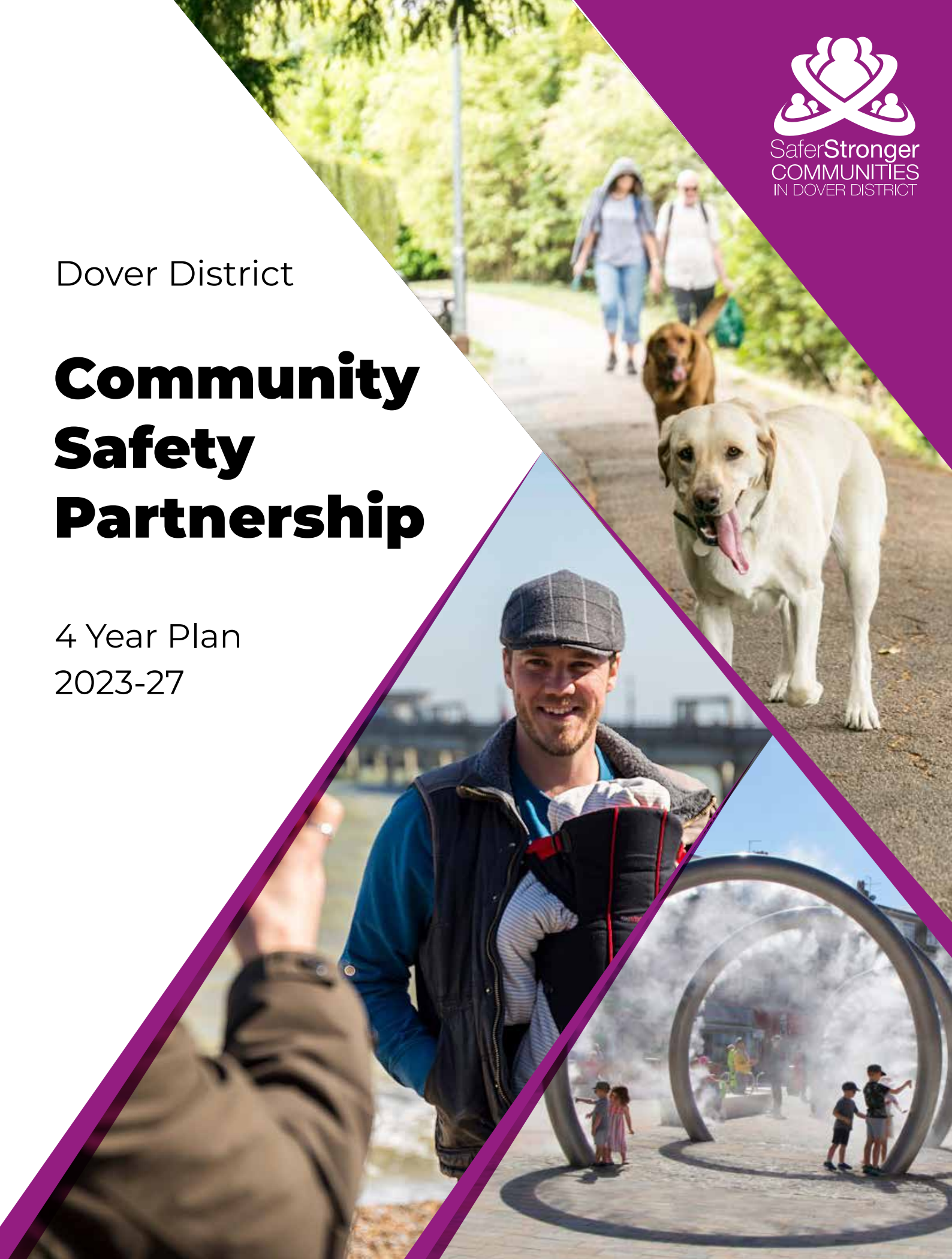


Safer Stronger  
COMMUNITIES  
IN DOVER DISTRICT

Dover District

# Community Safety Partnership

4 Year Plan  
2023-27



Safer People Safer Places

January 2023

## Our Vision

Responding to local Resident, Visitor and Business community safety needs and issues.

By working to resolve the root cause of crime and disorder, making the Dover district an even safer place to live, work and visit.



## The Executive Group

The Partnership is overseen by an Executive Group, comprising of senior personnel from the responsible authorities and other agencies, including the voluntary and community sector.

Sub-groups, addressing the two agreed direction of action, have been set up to deal with each priority. Each sub-group will have an action plan to address their objectives set by the Community Safety Partnership Executive.



# The Dover District Profile

The latest population figures from the 2021 Census show that there are **114,600 people living in the Dover District.**

This population size makes **Dover the 9th largest local authority in the Kent County Council (KCC) area.**

- **64% of the district's population lives in Dover's urban area**, with the remaining **36% living in the surrounding rural area** and settlements.
- Dover has an **older age profile** compared to the county average, with a **greater proportion of people aged 55 and over** the average for Kent County Council (KCC) area.
- **96.7% of Dover's population is of White origin** with the remaining **3.3% being classified as Black Minority Ethnicity (BME) origin**. The proportion of Dover's population classified as BME is **lower than the County average of 6.3%.**

In 2019 Dover district is the 4th most deprived district in Kent (out of 12 districts, with 1 being the most deprived).

Nationally, **Dover ranks 107th out of 317 local authority districts** in England. This rank places it within the 50% most deprived authorities in England. The levels of deprivation vary across the Dover district with **parts of Dover** being within England's **top 10% deprived areas** and yet **other parts are within England's least deprived areas.**

**Dover's unemployment rate is currently 3.6%.** This is higher than the **County average of 3.2%** and slightly **below the national average of 3.7%.** In September 2022 there were **2,490 unemployed people in Dover** which is 0.6% higher (15 people more) than August 2022 and **22.8% lower (865 less unemployed people) than September 2021.**

For further information, please use the following link to view the State of the District report:-

[www.dover.gov.uk/Corporate-Information/Facts-and-Figures/State-of-the-District.aspx](http://www.dover.gov.uk/Corporate-Information/Facts-and-Figures/State-of-the-District.aspx)

# Safer Stronger Communities Plan


**The Safer Stronger Communities Plan provides key stakeholders and the community with an overview of the main actions that will be taken during 2023-2027, to tackle issues highlighted in the Dover district. The plan is reviewed annually by the Dover District Community Safety Partnership to ensure our work remains effective and that our priorities continue to be relevant to local needs.**

Each year, for the duration of the plan, the Partnership come together to review the plan. The purpose of is to share knowledge and ensure there is a current understanding of community safety issues by members of the Partnership.

This review is done through intelligence analysis to identify the emerging priorities by considering the patterns, trends and shifts relating to community safety. Additionally, it will include a performance assessment of how far the partnership has achieved its previous priorities and an update of those issues that the local community consider to be emerging priorities. This work is central to the development of the Partnership Plan. We also work closely with other relevant agencies, the voluntary and community sector, the business sector and local residents.

Safer Stronger Communities Partnership is committed to working closely with the Police and Crime Commissioner and aligns its priorities with the PCC's.





**The following 3 priorities have been identified as the focus for the Plan 2023-2027**

- Safeguarding (Adults, Young People and Children)
- Serious Violence
- People and Places

**Other priorities to be delivered:**

- Anti-Social Behaviour
- Substance Misuse
- Road Safety and Awareness
- Food and Fuel
- Mental Health and Wellbeing
- Violence to Women and Girls (incl. Stalking and Harassment)
- Reoffending
- People and Communities
- Places and Environment
- Crime
- Prevent, Radicalisation and Extremism
- Serious Organised Crime
- Domestic Abuse





## Facts & Figures

- Victim Support recorded a decrease in the number of Single Point of Access referrals in the Dover District from 2,277 (2020/21) to 2,406 (2021/22).
- KCC Highways recorded an increase of Road Traffic Collisions in the Dover District from 260 (2020/21) to 299 (2021/22)
- Kent Fire and Rescue Service had an increase in total reported fires in the Dover District from 177 (2020/21) to 280 (2021/22)
- Kent and Medway Partnership Trust (KMPT) recorded an increase in the number of referrals being made into their services. Patients aged 18-64 patient numbers increased from 991 (2020/21) to 1144 (2021/22) and Patients aged 65+ also increased from 647 (2020/21) to 888 (2021/22)
- According to Kent Police – 30% of all victim based crimes in Dover District for 21/22 was Domestic Abuse related



## Kent Police and Crime Commissioner Plan – Making Kent Safer 2022-2025

- Work with residents, communities and businesses to prevent crime and antisocial behaviour
- Tackle violence against women and girls
- Protect people from exploitation and abuse
- Combat organised crime and county lines
- Be visible and responsive to the needs of communities
- Prevent road danger and support Vision Zero
- Protect young people and provide opportunities

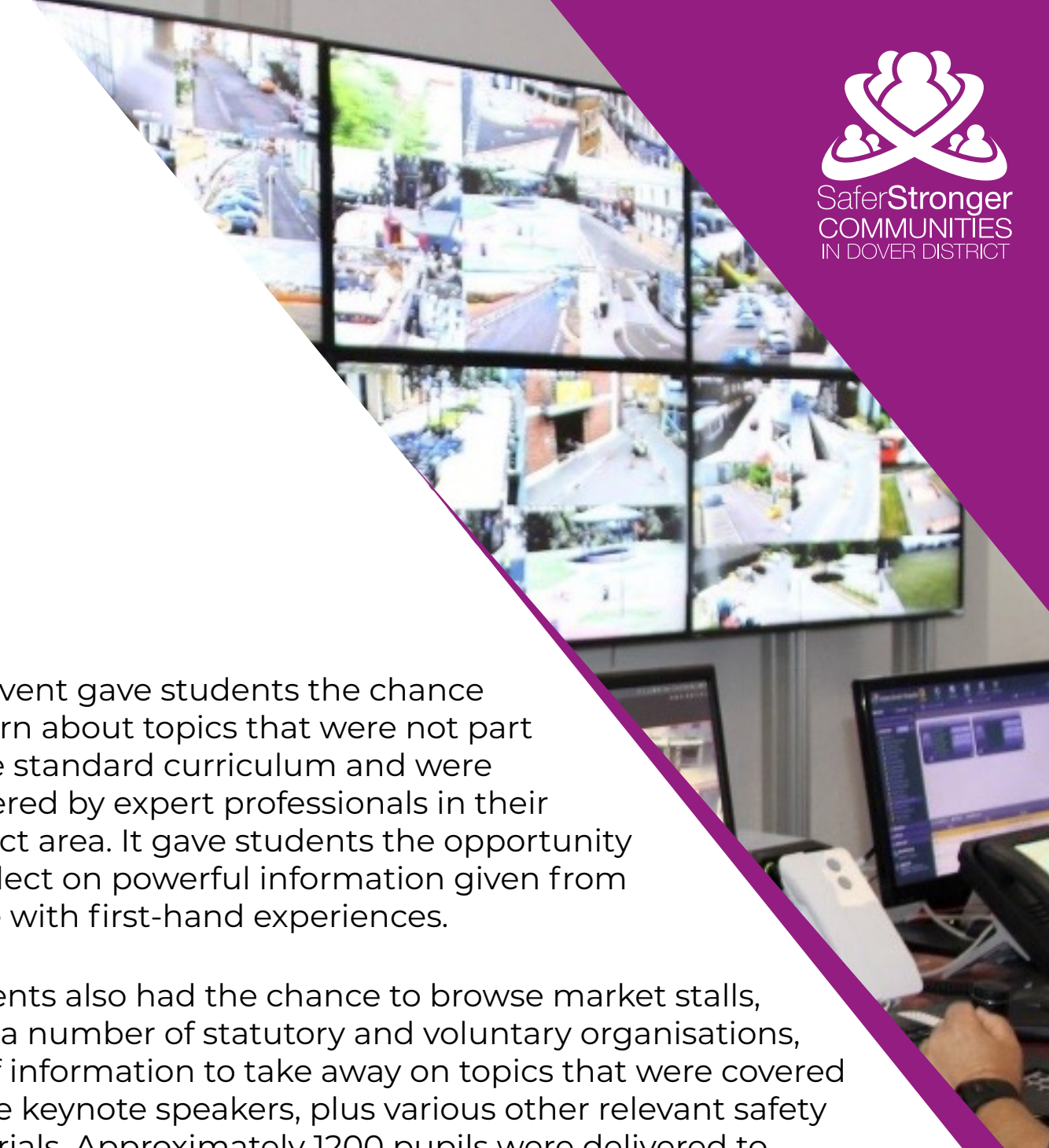
The Police and Crime Commissioner must produce a Police and Crime Plan that sets out his vision and priorities for policing and community safety, as well as the objectives and ambitions that Kent Police will be held to account on.



# Key Highlights

## IMPACT Roadshow (23rd – 27th May, 2021)

The Roadshow was aimed at Year 8 students and the theme was I.M.P.A.C.T (I'm Making Positive Action Choices Today) with the goal of conveying essential and positive messages concerning mental health, exploitation, gangs, and county lines, as well as teaching young people how to become personally resilient in choosing positive action choices.



The event gave students the chance to learn about topics that were not part of the standard curriculum and were delivered by expert professionals in their subject area. It gave students the opportunity to reflect on powerful information given from those with first-hand experiences.

Students also had the chance to browse market stalls, from a number of statutory and voluntary organisations, full of information to take away on topics that were covered by the keynote speakers, plus various other relevant safety materials. Approximately 1200 pupils were delivered to.



### Angel Express – VAWG Project (December 2021)

Following on from the murder of two females that had been reported nationally and anecdotal information regarding females in the District feeling unsafe, there was an emphasis on tackling violence against women and girls (VAWG) amongst CSP partner agencies, including the Kent Police and Crime Commissioner (PCC).

As a result, the PCC Office agreed to fund the Angel Express pilot initiative. A Kent Police led VAWG event was held at Dover Christ Church Academy, which was the highest attended in the county. Many females from a variety of demographics across the District expressed their concerns for their safety and associates. This pilot was considered to be a valuable project to reassure females that they could feel safer.

Approximately 20,000 views were made on social media platforms used to promote the scheme. Tickets for the pilot could be obtained through the Eventbrite platform, ensuring the anonymity of the service user and numbers of service users could easily be tracked.

### Wellbeing Roadshow (October 2021)

In line with our support around Mental Health and Social Isolation, the ‘Wellbeing Roadshow’ was developed. The ‘Wellbeing Roadshow’ took place across the Dover District, to promote the importance of positive mental health, what residents can do to improve their own mental health, as well as to educating residents of the risks of social isolation and how important human interaction is within local communities.

Around 300 people were engaged with across the events.







Safer**Stronger**  
COMMUNITIES  
IN DOVER DISTRICT

Dover District Council  
White Cliffs Business Park  
Dover, Kent CT16 3PJ

