



Safer Stronger  
COMMUNITIES  
IN DOVER DISTRICT



---

# PARTNERSHIP PLAN 2018

---

## OUR VISION

**The Dover District Community Safety Partnership (DDCSP) aims to maintain a safer stronger community where it is safe to live, work and visit by responding to identified local community safety needs and issues, addressing the wider causes of crime and the fear of crime.**

## PARTNERSHIPS

**The Partnership identifies a series of priorities that collectively partners can work together to achieve the best outcomes for individuals, families and communities.**

The Partnership is made up of a number of statutory agencies involved in promoting public safety, reducing anti-social behaviour and crime.

The Partnerships were introduced through Section 5 Crime and Disorder Act 1998. This appointed a number of authorities responsible for implementing strategies to reduce anti-social behaviour (ASB) and crime and disorder. In the Dover District those responsible authorities are:

- Dover District Council
- Kent County Council
- Kent Police
- Clinical Commissioning Group
- Kent Fire & Rescue Service
- Probation

We also work closely with other relevant agencies, the voluntary and community sector, the business sector and local residents.

The DDCSP is committed to working closely with the Police and Crime Commissioner and aligns its priorities with the PCC's.

The Funding that the Partnership receives will be made available to the CSP Sub Groups to bid into for projects – the projects must be aligned to the Partnership Objectives and the Police & Crime Commissioner Priorities.

## THE PARTNERSHIP PLAN

The Community Safety Partnership Plan has been developed to provide key stakeholders and the community with an overview of the main action we will take during 2017-2020, to tackle issues highlighted in the Dover district. The Plan will be reviewed periodically to ensure our work remains effective and that our priorities continue to be relevant to local needs. The Plan offers an opportunity for all partners to work together to meet one common aim, to ensure the Dover district continues to become safer and stronger. The Dover District Community Safety Partnership is forward looking with a strategy to tackle the whole aspect of community safety as opposed to only crime and disorder.

## STRATEGIC ASSESSMENT

Each year for the duration of The Plan the Partnership will carry out a Strategic Assessment. The purpose of a strategic assessment is to provide knowledge and understanding of community safety issues to the members of the Partnership.

This has been done through intelligence analysis to identify the emerging priorities by considering the patterns, trends and shifts relating to community safety. Additionally, it will include a performance assessment of how far the partnership has achieved its previous priorities and an update of those issues that the local community consider to be emerging priorities.

The annual Strategic Assessment is central to the development of the Partnership Plan.

We also work closely with other relevant agencies, the voluntary and community sector, the business sector and local residents.

The Dover District Community Safety Partnership is committed to working closely with the Police and Crime Commissioner and aligns its priorities with the PCC's.

The Strategic Assessment for 2018-2019 has identified the following priorities:

- 1 Domestic Abuse
- 2 Safeguarding (Vulnerable Adults and Children) (to include Substance Misuse, Prevent and Mental Health)
- 3 Anti-Social Behaviour
- 4 Prevent

## PRIORITY 1

# DOMESTIC ABUSE



Kent Police have 55 new cases reported to them every day.

**20%**

Domestic Violence accounts for 20 per cent of all violent crime.



Where victims and perpetrators of domestic violence have children it's estimated that 40% of these have lived with domestic violence all their lives.

### PARTNERSHIP AIMS

To bring a range of interventions to the area which capitalise on the newly commissioned RAISE interventions team adding value to their adult services. Support for the DDAG sub group of the CSP. Improve and promote the Domestic Abuse One Stop Shop. Support delivery of the Freedom Programme in the District.

## PRIORITY 2

# Safeguarding vulnerable adults and young people

### PARTNERSHIP AIMS

**Prevent** – Deterring individuals, providing education and diversionary signposting and activity.

**Protect** – Protecting individuals, families and communities against community safety threats.

**Ensure** – Ensuring the right controls and practices are in place and people have information to help themselves.

**Prepare** – Being prepared to manage impacts or consequences of community safety issues. Able to respond in a rapid and effective way.

**Pursue** – Prosecuting offenders and disrupting activity that has a detrimental affect on communities and individuals.

# 500,000

- Over 500,000 older people are abused in the UK every year.
- The number of children in need has risen from 391,000 in 2015 to 394,400 in 2016, an increase of 0.9% in England.

## SUBSTANCE MISUSE

- There has been an increase in the number of people aged between 45-70 years old seeking help for alcohol misuse.
- More than 40% of children who start drinking before the age of 13 will go on to abuse alcohol or to become alcoholics at some point in their lives.

## Mental Health

- According to the Mental Health Foundation, nearly one in 10 children and young people aged five to 16 are affected by a mental health problem.

## ISSUES THE PARTNERSHIP WILL BE TACKLING TO SAFEGUARD VULNERABLE YOUNG PEOPLE:

**Child Exploitation** – Child Sexual Exploitation, Female Genital Mutilation, Modern Day Slavery and Trafficking.

**Youth Inclusion** – Positive Relationships (Domestic Abuse, Sexual Health, Peer Groups) Community Engagement, Educational Engagement.

**Youth Resilience** – Missing, Mental Health, Substance Misuse.

**PRIORITY 3**

# Anti-social behaviour



According to Police.uk between January 2017 and December 2017 there were 2379 reports of ASB made to Police which represent approximately 19 % of all crimes reported.

**103**

The CSU received 103 complaints of anti-social behaviour last year.

**PARTNERSHIP AIMS**

To continue to make Dover district a safe place to live, work and visit by working with our partners to address community safety concerns and to increase the knowledge of the Community Safety Partnership.

**PRIORITY 4**

# Prevent



Prevent is part of the Government counter-terrorism strategy. It is designed to tackle the problem of terrorism at its roots, preventing people from supporting terrorism or becoming terrorists themselves.

**PARTNERSHIP AIMS**

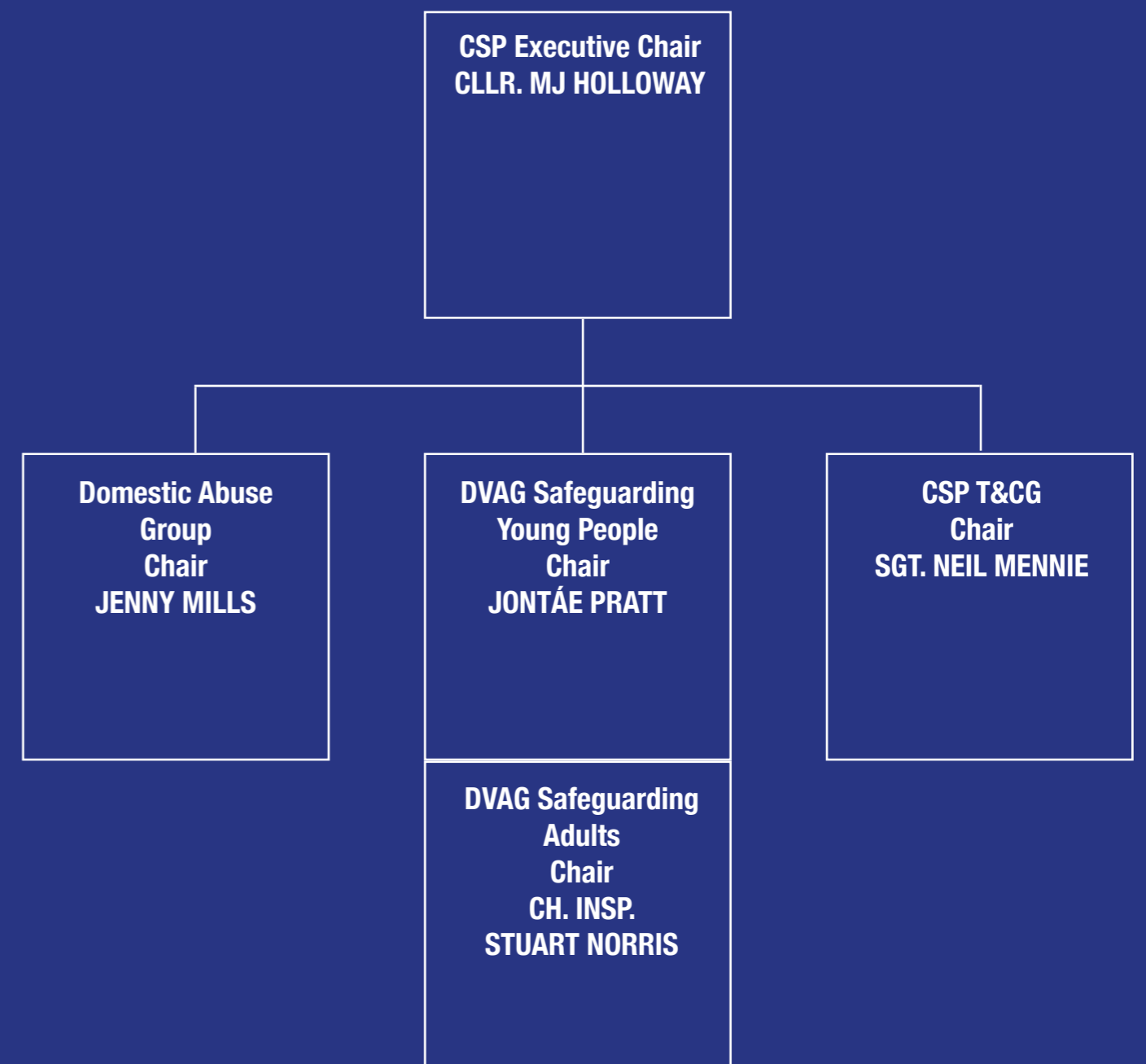
To support delivery on the governments Prevent Strategy from a local multi agency perspective.

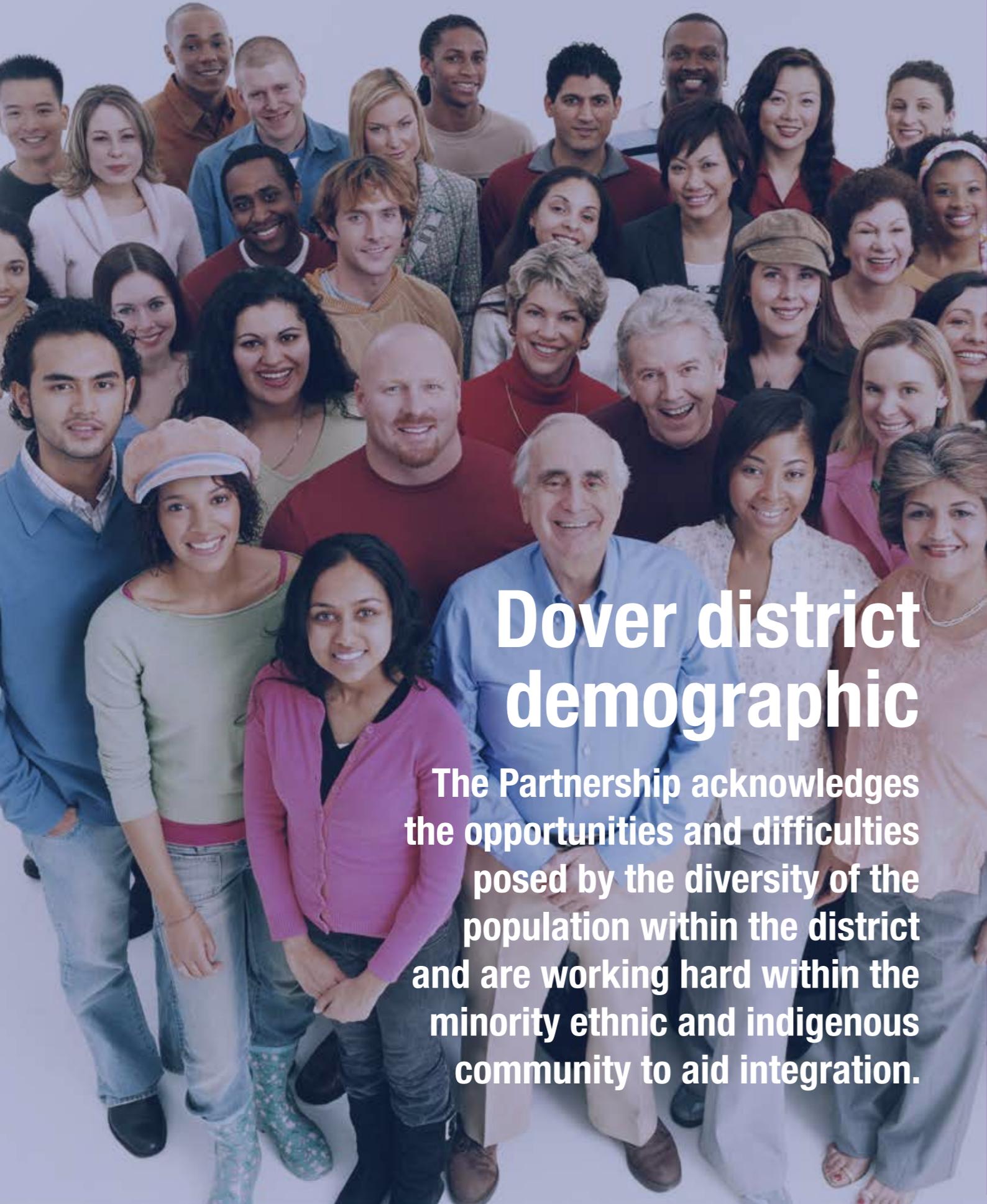
To support the Channel Panel process.

## EXECUTIVE GROUP



**The Partnership is overseen by the Executive Group, comprising senior personnel from the responsible authorities and other agencies, in the district who are able to help. Sub Groups have been set up to deal with each priority. Each sub group will have an action plan to address their objectives set by the CSP Executive.**





# Dover district demographic

**The Partnership acknowledges the opportunities and difficulties posed by the diversity of the population within the district and are working hard within the minority ethnic and indigenous community to aid integration.**

## Demographic profile of the district

The Dover district is situated on the eastern coast of the county of Kent in South East England, with an outstanding natural and cultural heritage. As home to the Port of Dover and closest to mainland Europe, Dover is often referred to as the 'Gateway to Britain.' The district covers approximately 123 square miles, and comprises a mixture of rural and urban areas.

Within its borders there are three major towns: Dover, Deal and Sandwich. There are also several large villages such as Aylesham and St Margarets-at-Cliffe, that sit within rural wards and account for large percentages of those wards populations.

The Dover district is home to around 113,100 people. The majority of residents live in Dover (43,800) and Deal (30,200) .

The district's population displays a much stronger than average trend of ageing. The proportion of people aged over 65 is forecast to increase by 72% in the 20 years to 2031, while the proportion of children and those of working age in the district would shrink. The overall population is expected to rise by 20.6%.

Average household size is the third lowest in Kent and is set to reduce further, a trend reflected across Kent. The population also suffers from a much higher than average incidence of long-term illness. Skills levels amongst the population are considerably lower than the Kent and regional averages. ONS Census 2011 records show that 96.7% of the population is of white ethnic origin (of which 92.9% are white British), with the remaining 3.3% from a range of minority ethnic groups. The Dover district has the lowest proportion of residents from a Black or Minority Ethnic group in Kent. It has minimal and decreasing numbers of asylum seekers, the great majority of asylum seekers now pass straight through Dover and the numbers coming through the port have been declining for some years.





Safer Stronger  
COMMUNITIES  
IN DOVER DISTRICT

Dover District Council  
White Cliffs Business Park  
Dover, Kent CT16 3PJ

<https://www.dover.gov.uk/Community/Community-Safety/Home.aspx>

