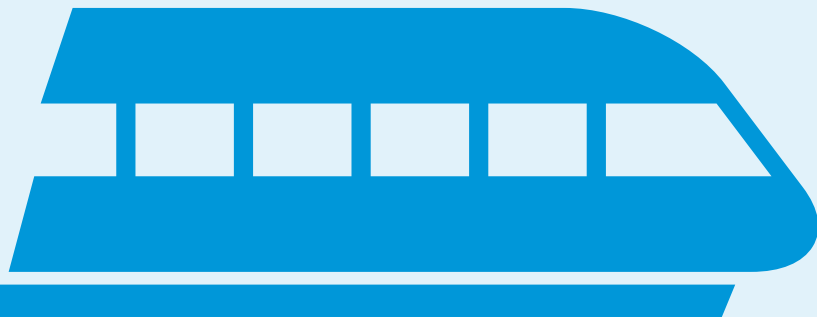




WHITE CLIFFS COMMUNITY RAIL PARTNERSHIP



ANNUAL REPORT
April 2024 - April 2025



SUPPORTING LOCAL COMMUNITIES

What is Community Rail?

Community Rail is an initiative brought in through the Department of Transport.

It is described as a grassroots movement working to engage communities in their local railway. Initiatives range from people helping to maintain station gardens to major refurbishment schemes.

Although some community railways provide a tourism service, they are largely separate from heritage and private railways which function solely as tourist attractions.

Community rail takes the form of Community Rail Partnerships and station adoption groups. 1

We work with the Department of Transport's vision in mind and follow the four pillars of Community Rail, part of the development strategy:

- providing a voice for the community
- promoting sustainable, healthy, and accessible travel
- bringing communities together
- support diversity, inclusion plus social and economic development 2

Alongside the government, we work with Community Rail Network, who empower communities, provide support, advice, and expertise to Community Rail Partnerships across the UK, including our own.

There are over 70 Community Rail Partnerships across the UK and we are proud to be one down on the South-East coast of England.

Alongside other partnerships, there are many station friends and volunteers, spending their time to improve station appearance and support projects and initiatives to encourage more individuals to use the train.



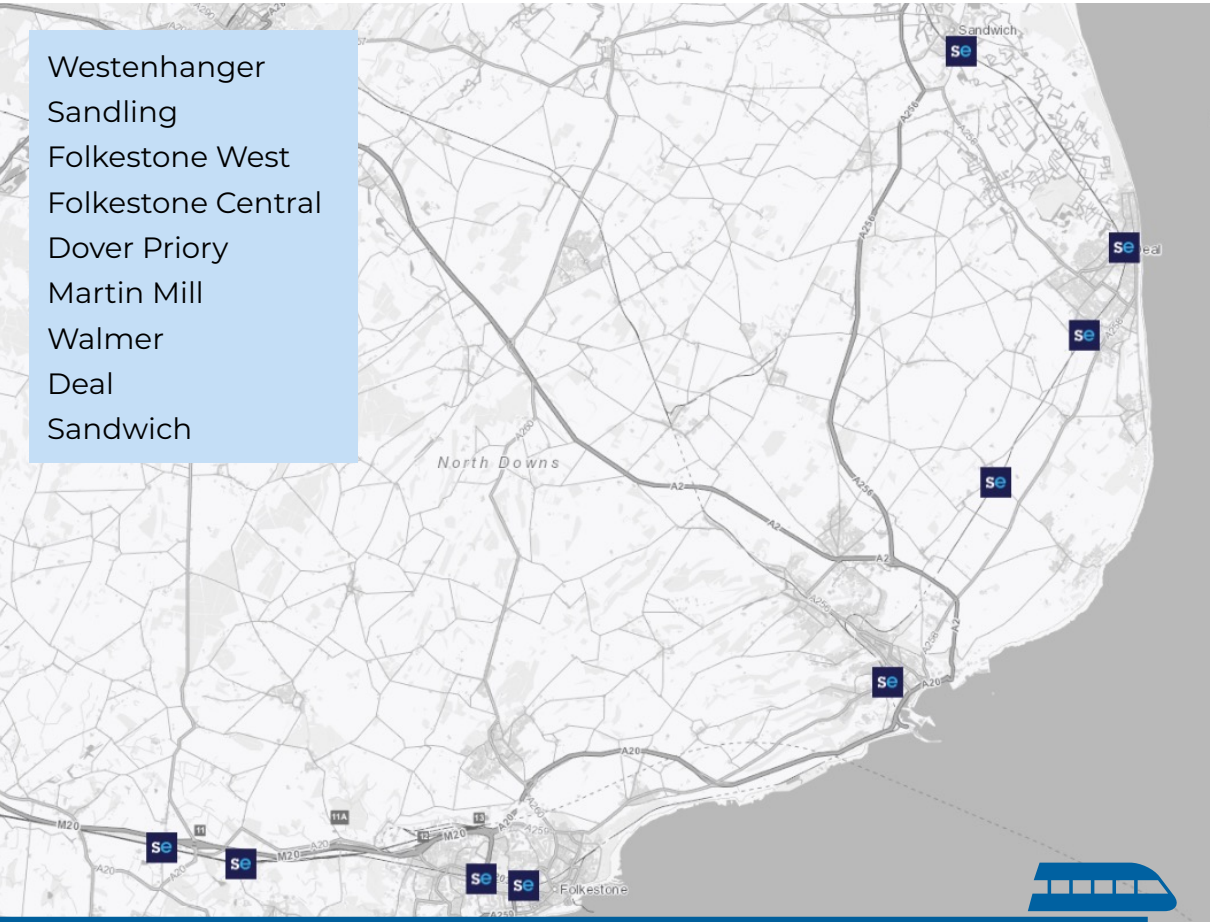
1. Community rail - GOV.UK (www.gov.uk) - <https://www.gov.uk/government/collections/community-rail-lines>

2. Community rail development strategy - GOV.UK (www.gov.uk) <https://www.gov.uk/government/publications/community-rail-development-strategy>

Who are we?

The White Cliffs Community Rail Partnership is a partnership made of 10 partners located in the South-East coast of England.

Covering 9 stations, across 2 districts we are a growing partnership moving into our fifth year as an active CRP.



Our partnership is formed with 10 partners, including district and town councils, railway operators, community assets and partnerships:

- | | |
|-------------------------------------|--------------------------------------|
| Folkestone Town Council | Sandwich Town Council |
| Folkestone & Hythe District Council | White Cliffs Countryside Partnership |
| Dover Town Council | Southeastern |
| Dover District Council | Network Rail |
| Deal Town Council | Community Rail Network |



Financial Report & Funding



White Cliffs CRP is thankful to our local train operator Southeastern for funding the partnership allowing it to start and continue each year.

We have received £30,000 annually to launch and run the partnership.

There are set costs to run the partnership which include staffing for our line officer, administration fees and membership fees to Community Rail Network. These are illustrated below:

White Cliffs Community Rail Partnership		
Costs		Amount
Staff Costs		£22,500.00
CRN Membership		£180.00
Administration, Meetings, etc.		£500.00
	Total	£23,180.00

We are thankful that these costs have not varied despite other rising costs which gives a consistent and considerable amount for projects this year.

The White Cliffs Community Rail Partnership is in a fortunate position to still have funds available that are rolled over from previous years meaning we are not in a deficit and have monies to utilise. This is outlined alongside the financial breakdown below:

Financial Breakdown from 2024/25



White Cliffs Community Rail Partnership 2024/25	
Costs	Amount
Staff Costs	£22,500.00
CRN Membership	£180.00
Administration, Meetings, etc.	£500.00
Annual Stakeholder Event	£44.93
Sandwich Station Garden Project	£685.40
Community Rail Conference	£141.50
Guided Walks	£1,625.00
Resident Platform Project	£12,000.00
Misc. I.E. Car Parking	£5.90
Total	£37,682.73

Funding Rolled Over	£17,401.10
Funding Received	£30,000.00
New total for 24/25	£47,401.10
Total remaining for 25/26	£9,718.37*

* Not to go below £6000 as reserves for the partnership should funding discontinue to source other funding.

Project and Events from 2024/25



Another year has passed as we reflect on what has been accomplished by the White Cliffs Community Rail Partnership.

Though we have had to say goodbye to some of our well-loved members we have said hello and greeted new. Building new relationships, and working on new project proposals, there have been some successes in the form of funding and projects being completed.

We are pleased that we have been able to work with more stakeholders across more stations, partners to promote Community Rail and collaborate and engage with over 1000 young people to educate on the dangers of the railway and how to stay safe.

This continues to invigorate us, and we look forward to channelling our passions on what we can achieve in the next 12 months!

Annual Stakeholder Event

We were very happy to continue with our Guided Walk programme delivered by our partner White Cliffs Countryside Partnership. With great feedback and each walk embarking on a new adventure our walks programme proved popular with a chance to learn about the local area, stations, nature, and biodiversity there was something for everyone!



Sandwich Garden Project

As we have done with other stations across our line, this year we worked with Sandwich in Bloom who continue to work their magical green fingers across the town. Funding from the partnership enabled the station area to be spruced up bringing in some colour with beautiful flowers. Thanks are given to Sandwich in Bloom who continue to garden the area.





Future Foundry Project

The CRP are also pleased to have been supporting and hope to commission a group project completed by young people at Future Foundry. Their visions and ideas of each piece of artwork linking to different train stations along our line and the uniqueness of each place. This project is also still in the planning and design phase that we hope to bring to life within the next year!

Passenger Numbers Across Our Line

Below are some statistics taken from the ORR website (Office of Rail and Road) showing the footfall at our stations across the line.

Passenger numbers continue to increase year on year, still not quite pre-pandemic statistics but a healthy uplift in numbers and understanding the difference is likely to be lower taking into consideration commuter trains are not as frequently used with working from home still a successful option that a lot of individuals choose.

The top 3 stations being Dover Priory, Folkestone Central and Folkestone West, these have not changed and continue to be the White Cliffs lines busiest stations.

We hope that with continued projects brightening up the stations and attracting more persons to the area this will also increase numbers, train usage, sustainable travel options and awareness of our CRP.

Station	2019-20	2020-21	2021-22	2022-23	2023-24
Westenhanger	80,168	18,902	45,092	54,372	61,216
Sandling	96,612	20,000	53,828	70,978	73,646
Folkestone West	775,466	201,292	513,322	610,330	678,666
Folkestone Central	1,031,302	267,698	682,674	811,686	902,566
Dover Priory	975,402	345,324	732,322	895,588	966,958
Martin Mill	70,648	19,956	37,658	45,894	57,212
Walmer	228,638	64,392	147,402	179,250	199,728
Deal	586,950	163,884	393,602	427,624	493,290
Sandwich	351,470	105,692	282,258	268,232	307,916

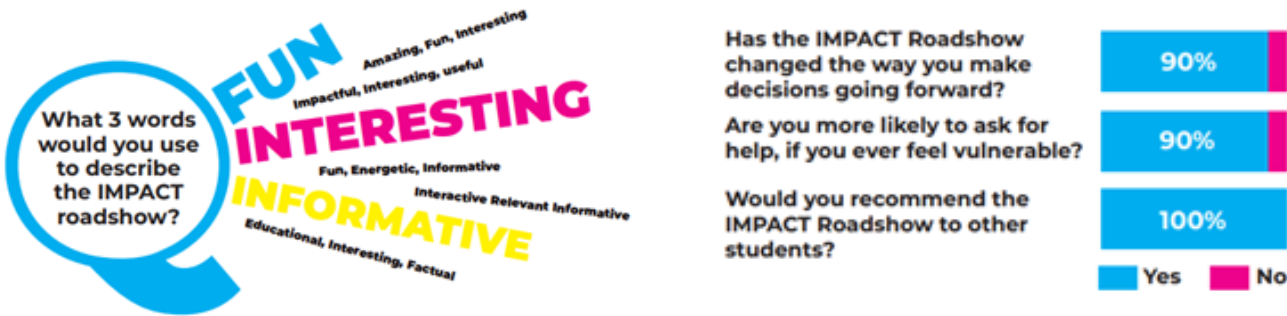
This data was collected from the Office of Rail and Road.



Rail Safety Talks

Rail Safety talks were delivered to Year 8's in secondary schools around Dover District as part of the IMPACT Roadshow. This engaged over 1000 children raising the importances of following rail safety and the tragic consequences that can occur if rules are not followed. Material was sourced and shown from Network Rail with videos of real-life victims and scenarios that have happened with real life dangers.

The IMPACT roadshow, which stands for 'I'm Making Positive Action Choices Today', brought different topics to each school. With it being Rail Safety Awareness week, students were educated on the dos and don'ts and informed of some life-saving facts about the railway to understand the risks. Positive feedback was given by students which shows the difference this knowledge made!



Resident Platform Project

Utilising our accreditation status, we were able to apply for some external funding this year which we were successful for with Community Rail Network.

This funding bid enabled us to proudly work with Strange Cargo on their series of Resident Platform projects at Folkestone West.

We invited some stakeholders to work with us on this plinth's theme of 'Lost Property' to see what wonderful creations could be made.

Along with members from the White Cliffs Community Rail Partnership, there were individuals from Incredible Edible, National Trust, Folkestone & Hythe District Council and all that participated had a local connection to the station linking them to the project even more so.

The project is still being pulled together, and we're excited to see the final piece come to fruition within the next year.





Thank you for your support to White Cliffs Community Rail Partnership!

Should you wish to support us further by getting involved,
please contact us.

Line Officer: Rebecca Dunroe
Email: community@doover.gov.uk
Webpage: <https://arcg.is/Kryb4>

