

COMMONWEALTH WAR MEMORIAL, DOVER

PUBLIC CONSULTATION



INTRODUCTION

The Commonwealth War Memorial, Western Heights, Dover is a unique proposal to honour the 1.7 Million Commonwealth members of the Army, Navy, Air Force and Merchant Navy who lost their lives in World War I and World War II.

The design includes 12 white granite walls representing each year of conflict (1914-1918 and 1939-1945). On each wall will be inscribed the names of casualties recorded by the Commonwealth War Graves Commission.

DELIVERY AND FUNDING

The plans for the Memorial are being developed using LIBOR funding. The fund is awarded by Central Government to promote activities to support and honour armed forces veterans.

The proposals for the Memorial will require planning permission and Scheduled Monument Consent. The intention is that an independent trust will deliver and manage the Memorial.

Subject to receiving the necessary consents, the Council hopes to attract funding and hand this over to a Trust in 2018. Construction is likely to take several years to complete.

HAVE YOUR SAY

This is a public consultation and is your opportunity to share your views on this project before a planning application and Scheduled Monument Consent are formally submitted to Dover District Council in the New Year.

Please review these Boards and if you have any queries, talk to the team.

You can provide your feedback by the following methods:

- By questionnaire at one of the events
- Online at www.dover.gov.uk/cwm

CONSULTATION EVENTS

There are two events at Dover Library, Market Square, Dover, CT16 1PH:

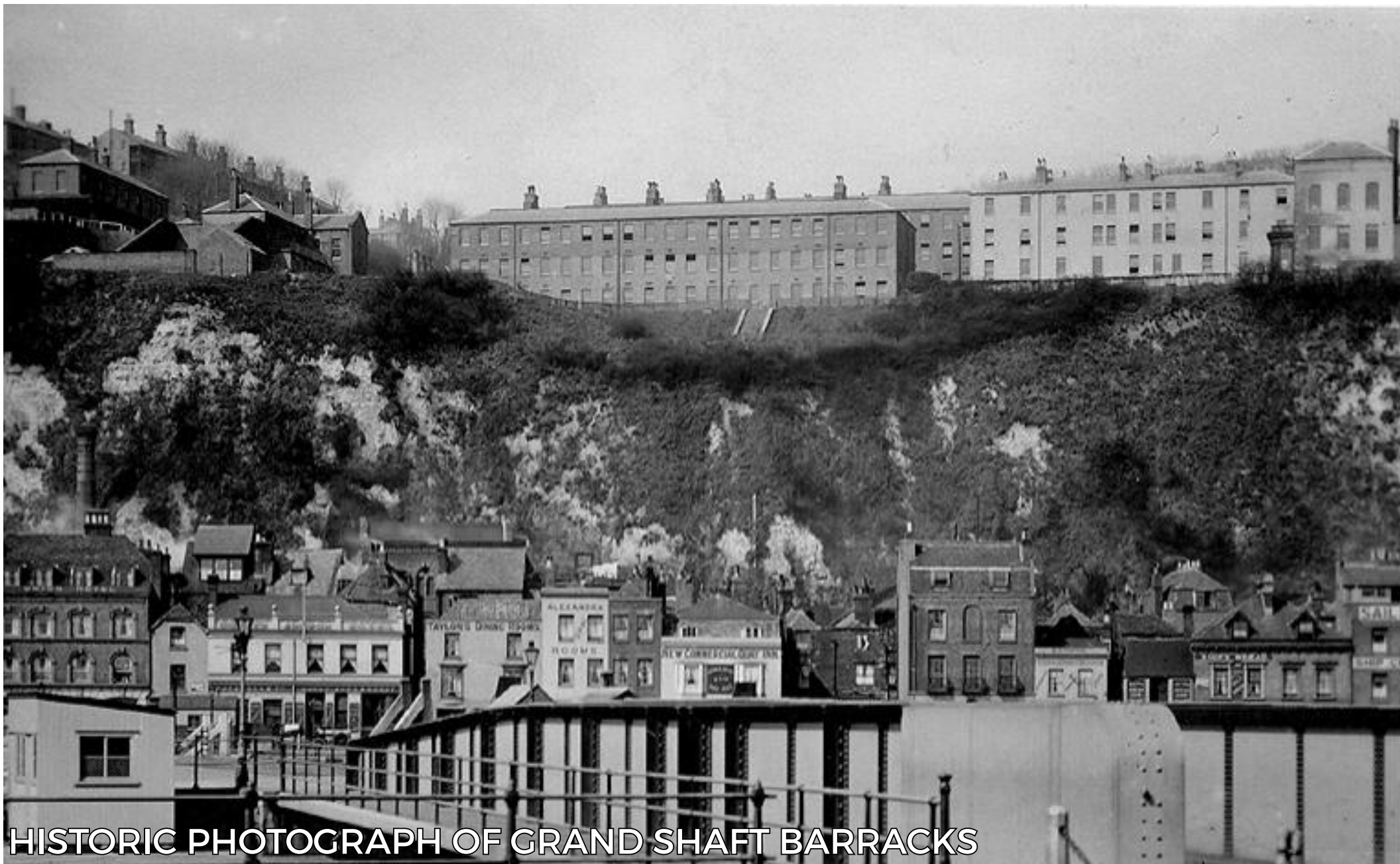
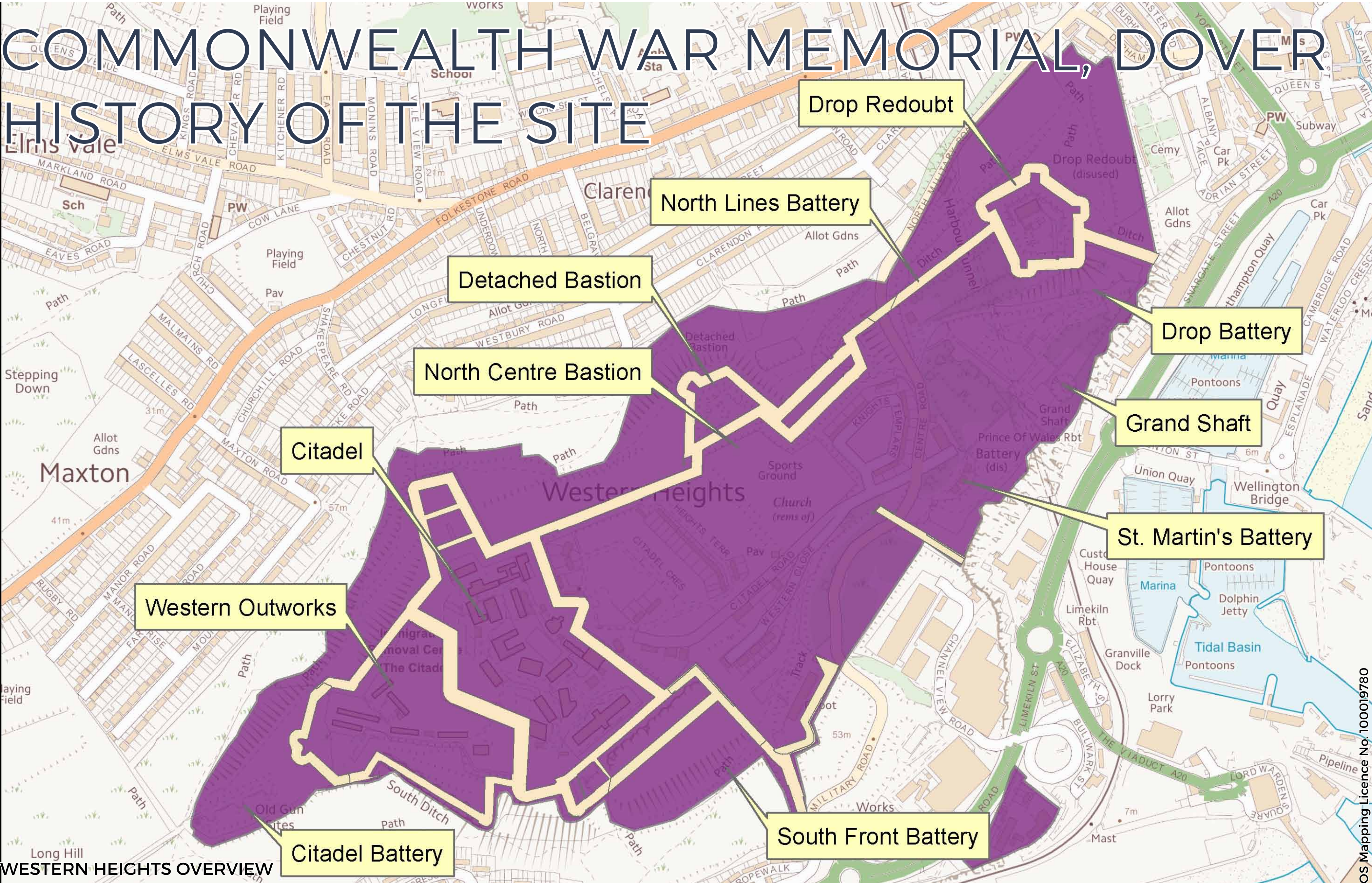
- Wednesday 22nd Nov, 2pm-7pm
- Saturday 25th Nov, 10am-3pm

CONSULTATION PERIOD

The consultation runs from 10th November to 10th December 2017

FURTHER INFORMATION

If you have any other enquiries you can email the project team at UKProject.DoverWarMemorial@wsp.com



HISTORY OF THE SITE
Military activity has been an important part of the history of the site. The Grand Shaft Barracks was an integral part of the Western Heights, that constituted the largest, most complete English fortifications of the Napoleonic era. This defensive landscape includes important heritage assets such as the Drop Redoubt, the Citadel and the Grand Shaft but in-between these monumental structures are myriad military structures within the landscape.

The armed forces have long moved out, but this history is easily visible in the many defensive elements that can be experienced first-hand on visiting the area. Substantial academic literature and records exists that has helped to inform and shape the plans for the Memorial. Drawings, photographs, and text allow us to understand how the site might have been in its former use. Armed forces were accommodated in large Georgian barracks dating back to 1804 that were sited on terraces cut into the chalk of the white cliffs. There was a parade area around the entrance to the Grand Shaft. The Grand Shaft Barracks were demolished and the site cleared between 1965 and 1991.

The Grand Shaft Barracks housed approximately 700 men. The barracks would have been a prominent feature on the cliff and in the town, and the terraces on which they sat preserve evidence of the changes to sanitation, drainage and water supply designed to improve the living conditions of the soldiers that lived in them.

These heritage treasures of the Western Heights are largely hidden and the sculpted landscape of the Grand Shaft Barracks has proved to be a challenge as it has implications for design and layout in terms of accessibility and mobility to enable more visitors to enjoy this wonderful place.

Currently the site is maintained but there are a number of non-native species of plants/trees on the site. The Western Heights Preservation Society, with a team of dedicated volunteers offering their time and energy, have injected vitality into the place and opened many eyes to this incredible place.

COMMONWEALTH WAR MEMORIAL, DOVER

DESIGN CONCEPT



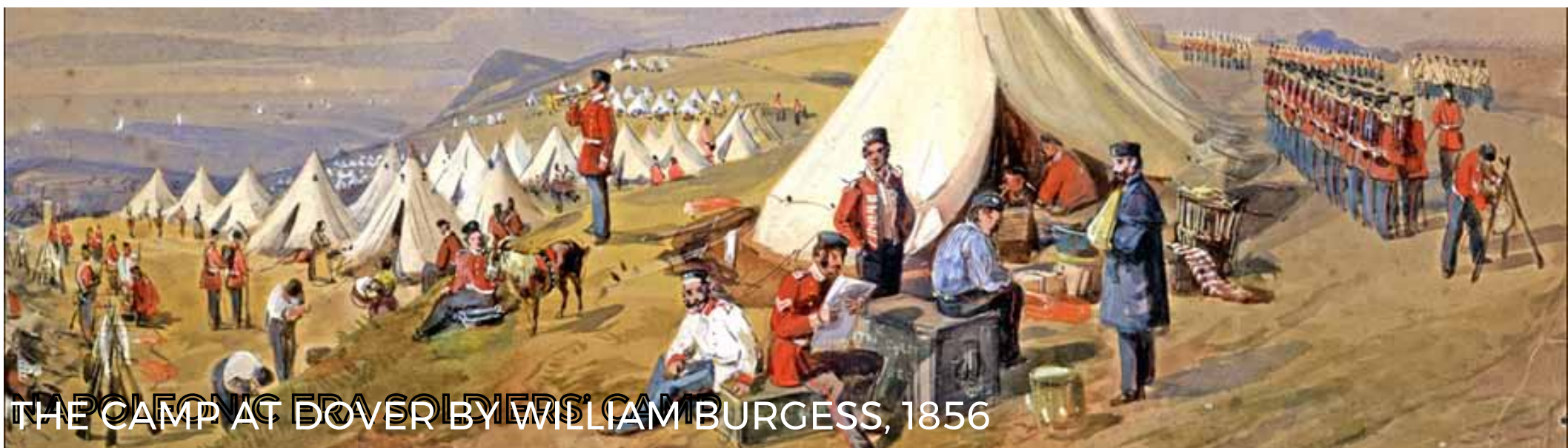
DESIGN CONCEPT: ARTIST'S IMPRESSION OF A CEREMONY ON THE PARADE GROUND



CONCEPT DESIGN PLAN VIEW



PHYSICAL MODEL ILLUSTRATING GEORGIAN BARRACKS



THE CAMP AT DOVER BY WILLIAM BURGESS, 1856

DESIGN CONCEPT

This is a proposal for a new War Memorial that simultaneously revels in the peaceful times we are fortunate to enjoy, looks back to a past suffering with loss and horror in the fight for this luxury, whilst looking forward to a future that is strong as it is united globally in an effort to maintain harmony between nations.

The form of the memorial has been specifically designed to have a military feel. This resonates with the history of the site and puts the visitor in mind of the sacrifice of war.

The design consists of 12 terraces with walls faced with stone and inscribed with the names of all those who died in conflict from all Commonwealth nations between 1914 and 1947.

The Commonwealth War Graves Commission have kindly allowed the use of their list of the 1.7million commemorated names. This is over a kilometre of wall. All names face the sun and the sea.

The design also includes:

- A visitor centre with educational space, mobility scooter hire, a viewing terrace and cafe
- A parade ground between the terraces and the Grand Shaft

EXPERIENCING THE MEMORIAL

The Memorial will be open for all, inviting visitors from around the country and from across the world to come and experience Dover's coastal location and to fully appreciate the history of the fortifications at the Western Heights. Passengers passing through the port will be encouraged to take the time to visit this Monument in peace. The Memorial will hold national commemorative events, drawing international attention to the Monument and Dover.

The vision of the Western Heights Preservation Society in opening the heritage assets to the public will be recognised and furthered by formal investment.

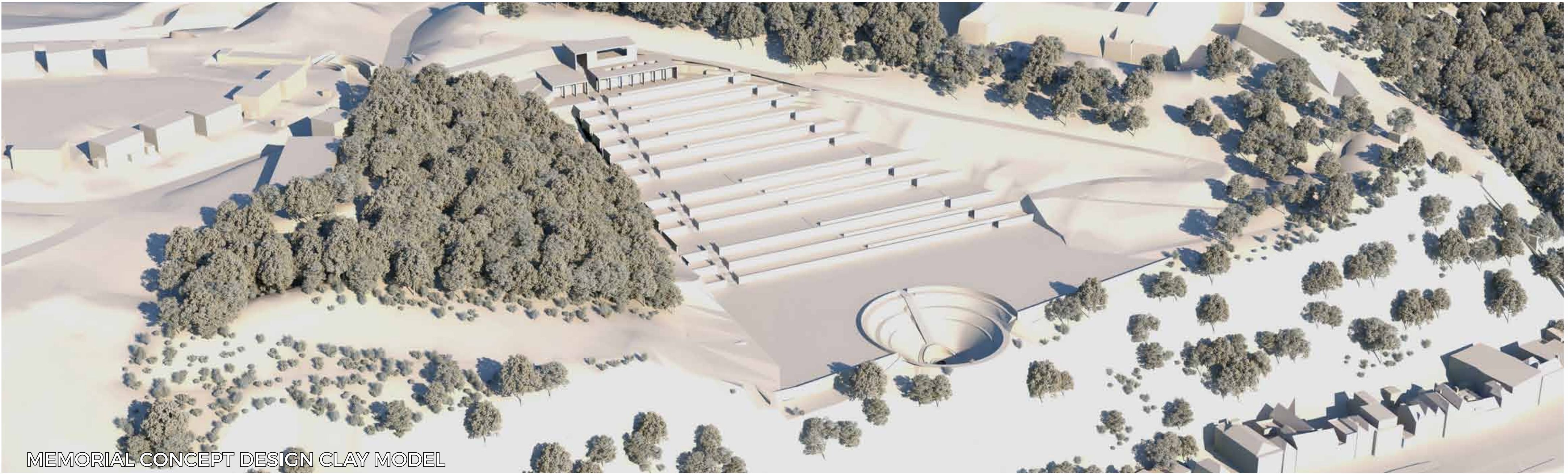
It is essential that the Memorial is inclusive for everyone to enjoy. Car-parking will be improved and coach-facilities will cater to group visits. There will be new toilet and refreshment facilities that serve visitors to the Memorial and the Western Heights. The Memorial will provide a formal setting for a moving experience of reflection upon the past, present and future.

COMMONWEALTH WAR MEMORIAL, DOVER

FURTHER DETAILS



ARTIST'S IMPRESSION OF A TERRACE WITHIN THE MEMORIAL



MEMORIAL CONCEPT DESIGN CLAY MODEL

TRANSPORT AND ACCESS

A transport strategy has been developed to minimise negative impacts on the transport network, including:

- A fully accessible network of paths through the memorial
- Disabled parking adjacent to the memorial
- Mobility scooter hire within the visitor centre
- Bus/coach drop-off and pick up adjacent to the memorial
- Car parking at two upgraded car parks a short walk from the memorial
- Overflow car parking and coach waiting around 400m from the entrance

- Upgrades to junctions on the approaches to allow access for coaches
- An option to increase public transport links with Dover Priory and the Town Centre as visitor numbers to the site increase

ECOLOGY

The site is ecologically sensitive and we will retain as much high quality habitat in the design within the site as possible. Where disturbance to habitat is unavoidable we will take all required steps to reduce harm to wildlife by moving animals off the site to newly created or improved local habitat areas.

CONSTRUCTION

The construction period for the memorial is likely to be several years and there will be significant construction activity. We are undertaking a construction strategy to identify impacts during the construction phase.

We will include proposals to reduce construction impacts. Measures will include restrictions on working hours, lighting and a requirement to maintain pedestrian access around the Western Heights.

OPERATION & COSTS

The site will be operated by an independent Trust. The Trust will be wholly responsible for the construction and operation of the memorial, including raising funding to deliver it. We are undertaking a construction and operational cost plan in order to demonstrate the viability of the memorial and this is required as part of the planning submission.

Our current preferred approach is for the memorial to be free entry, but we would expect charges for parking and for hire of mobility scooters. There would also be events, a gift shop and café which would generate some revenue.