



Jute Fields

St. Richards Road, Walmer, CT14 9ZL



Full price

£ 280,000

Value

25% - 75% share

Rent (pcm)

£160.42 - £481.25

Service charge (pcm)

£47.92

Features

- Drive for two vehicles
- Fully fitted kitchen with integrated appliances
- Vinyl flooring and carpets throughout
- Private garden space
- Staircasing options available

For further information contact Dover District Council:

communityhousing@dover.gov.uk

You do not need to register with a Help to Buy agent.

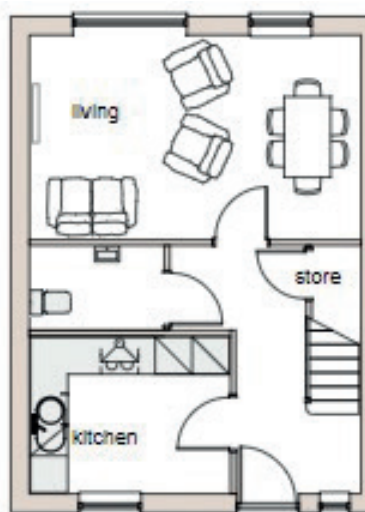


Description

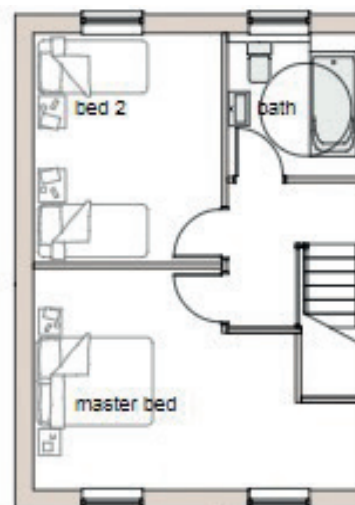
2 x 2 bed houses under the shared ownership scheme.

Jutes Field is a stunning new development of 2-bedroom houses. The houses have been stylishly designed. Interior finishes have been expertly fitted to match your expectations as a first-time buyer. With fully fitted kitchens, integrated appliances, vinyl flooring, and carpet as well as a double driveway for each house, these are homes you can move into straight away.

Floor Plan



Ground Floor



First Floor

Dimensions (approx.)

Living Room: 5.36m x 3.26m (17'7" x 10'8")

Kitchen: 3.27m x 2.52m (10'8" x 8'3")

Bedroom 1: 5.36m x 3.67m (17'7" x 12'0")

Bedroom 2: 3.67m x 3.12m (12'0" x 10'3")

For more information on Shared Ownership, please see our website
www.dover.gov.uk/shared-ownership

For further information contact Dover District Council:
communityhousing@dover.gov.uk
You do not need to register with a Help to Buy agent.