



WILDLIFE NEWS

CELEBRATE WORLD BEE DAY

JUNIOR RANGER NEWS

VISIT OUR SITES



GREEN GANG EASTER 2021

Telephone: 01304 241806 Email: wccp@dover.gov.uk



WILDLIFE NEWS

BUTTERFLY SPOTTING

Now is the time of year to keep an eye out for butterflies as they fly around to look for food and places to lay their eggs. How many can you spot? It's best to look for butterflies on a calm, sunny day in a sheltered place. The Western Heights Local Nature Reserve in Dover is a good place to look.



MOON SNAILS

These strange objects were once the eggs of moon snails. The baby snails hatched out underwater and left these half moon shaped egg cases behind, which the tide then washed up on Greatstone beach.



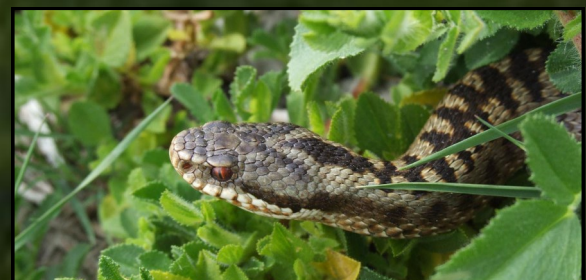
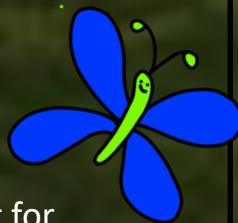
GREEN FUEL

Our Ranger's are always trying to reduce pollution so now we use a green fuel in our chainsaws. It's better for the planet, wildlife and the Rangers.



ADDERS ABOUT

On sunny days keep an eye out for sun-bathing adders. These reptiles are cold blooded which means they need to lie in the sun before they can move around. Sunny open places at our Dover sites, including Samphire Hoe, are good places to look for adder. But keep your distance, they can bite!



LOVE YOUR PLANET

CELEBRATE WORLD BEE DAY

20th May 2021 is the United Nation's World Bee Day.

Bees are pollinator superheroes that help all sorts of foods to grow, such as strawberries, apples, cherries & almonds. However, they are losing their homes and food plants to habitat loss and are under threat from chemicals used by farmers and gardeners.

Help the bees by making a bee hotel ready for World Bee Day. You could also plant some bee friendly plants—check out the Royal Horticultural Society's website for advice.



MAKE A BEE HOTEL

You will need: a plastic bottle, scissors, sandpaper, string & a mixture of materials such as bamboo canes, hollow plant stems, dry sticks, corrugated cardboard, moss...

Instructions: Ask an adult to help cut the bottom half off a bottle. Fill it with materials, making sure to pack it tightly, and leave an empty bit at the front to act as a rain protector. Use string to keep bundles of small sticks together and moss or mud to block up one end of any hollow material. Smooth the entrance holes with sandpaper if needed.

Secure in a sunny place, about 1m off the ground. Don't forget to check for bees!

Move the bee hotel to a cool, dry place like a shed from October to February to keep any eggs safe. In the spring replace any used stems or canes (look for holes that have been blocked up and then broken open).



JUNIOR RANGERS NEWS

GET SNAPPING

Junior Rangers can take photos of their bee hotels or plant some bee friendly plants to work towards their next badge. Just email your photos to wccp@dover.gov.uk

JOIN THE HUNDREDS OF LOCAL JUNIOR RANGERS!

The Junior Rangers take a closer look at wildlife & ecology by taking part in WCCP & RMCP events and activities.

It only costs £5 to join and by completing activities or attending events you progress through the levels from Junior Ranger (5 events) to Peregrine (40 events) earning badges, certificates and wildlife themed prizes along the way.

To join please email wccp@dover.gov.uk



What's another name for a wasp?

A wanna-bee!

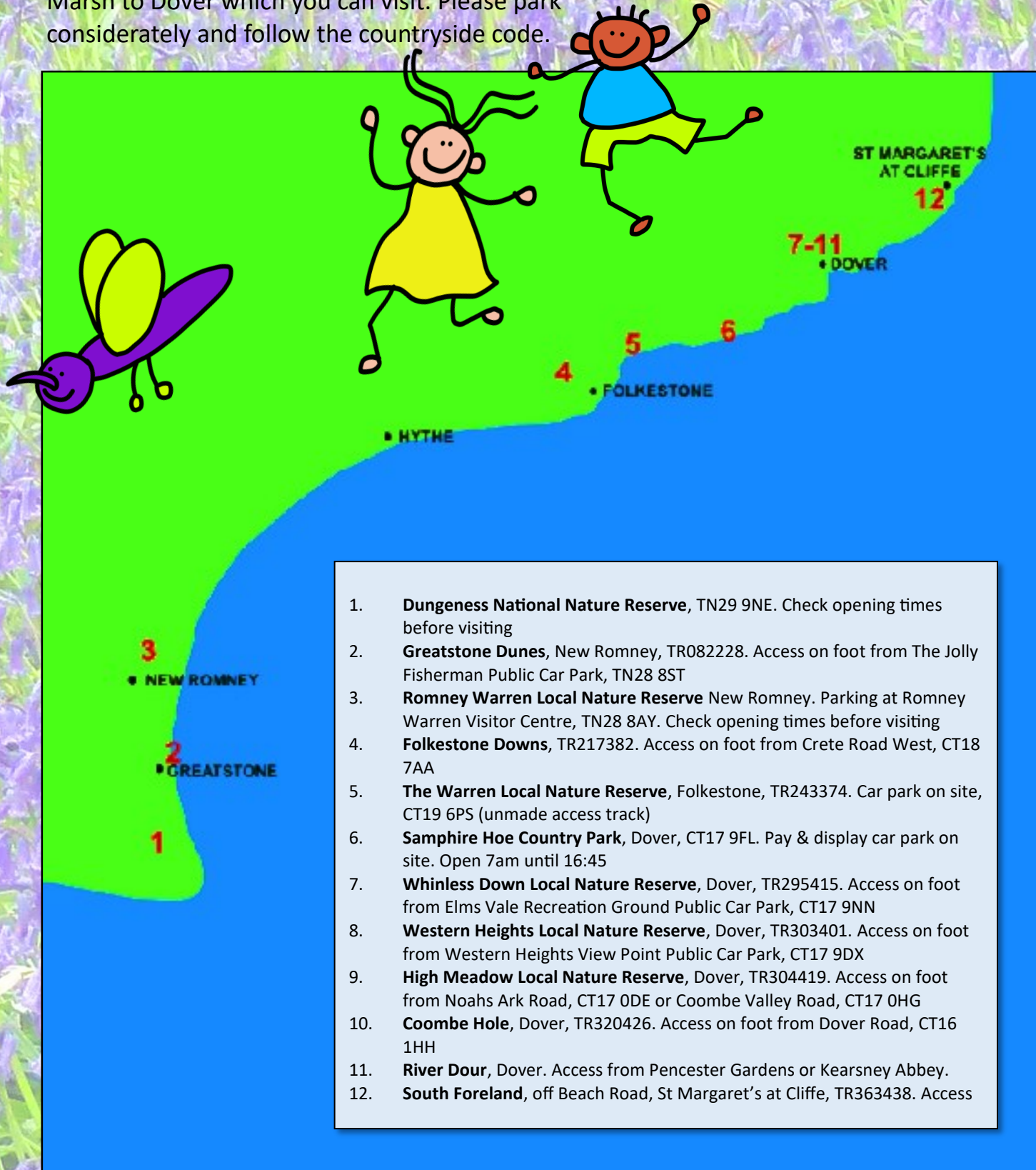
What do bees chew?

Bumble gum!



VISIT OUR SITES

WCCP & RMCP manage sites from Romney Marsh to Dover which you can visit. Please park considerately and follow the countryside code.



1. **Dungeness National Nature Reserve**, TN29 9NE. Check opening times before visiting
2. **Greatstone Dunes**, New Romney, TR082228. Access on foot from The Jolly Fisherman Public Car Park, TN28 8ST
3. **Romney Warren Local Nature Reserve** New Romney. Parking at Romney Warren Visitor Centre, TN28 8AY. Check opening times before visiting
4. **Folkestone Downs**, TR217382. Access on foot from Crete Road West, CT18 7AA
5. **The Warren Local Nature Reserve**, Folkestone, TR243374. Car park on site, CT19 6PS (unmade access track)
6. **Samphire Hoe Country Park**, Dover, CT17 9FL. Pay & display car park on site. Open 7am until 16:45
7. **Whinless Down Local Nature Reserve**, Dover, TR295415. Access on foot from Elms Vale Recreation Ground Public Car Park, CT17 9NN
8. **Western Heights Local Nature Reserve**, Dover, TR303401. Access on foot from Western Heights View Point Public Car Park, CT17 9DX
9. **High Meadow Local Nature Reserve**, Dover, TR304419. Access on foot from Noahs Ark Road, CT17 0DE or Coombe Valley Road, CT17 OHG
10. **Coombe Hole**, Dover, TR320426. Access on foot from Dover Road, CT16 1HH
11. **River Dour**, Dover. Access from Pencester Gardens or Kearsney Abbey.
12. **South Foreland**, off Beach Road, St Margaret's at Cliffe, TR363438. Access



Follow us
#GreenGangAtHome

