



WHAT'S ON IN THE HOLIDAYS?

TWEET TREATS

Give the birds a tasty treat and make a bird feeder.

HEART ART

Make a nature inspired, hanging, heart decoration .

LOVE YOUR PLANET

Put up a nest box ready for birds to lay their eggs.

SCAVENGER HUNT

Go on a valentine's themed scavenger hunt.

WINTER MENU

See if you can spot birds feasting on winter seeds and berries with our guide.

COMPETITION

Enter our Competition to win an RSPB bird guide.



GREEN GANG FEBRUARY HALF TERM 2021

Telephone: 01304 241806 Email: wccp@dover.gov.uk



WINTER BIRDS

At this time of year, birds will be looking for berries, seeds and invertebrates, like worms, to eat. They need to eat a lot to stay warm.

Make a 'tweet treat' to give them some extra food. Try your hand at our bird themed dice game too!



TWEET TREATS

Make a bird feeder to feed the wild birds in your garden. You will need a small cardboard tube/toilet roll, peanut butter and bird seed.

Use a knife to spread peanut butter all over the outside of your tube then roll it in a bowl of bird seed until it's covered.

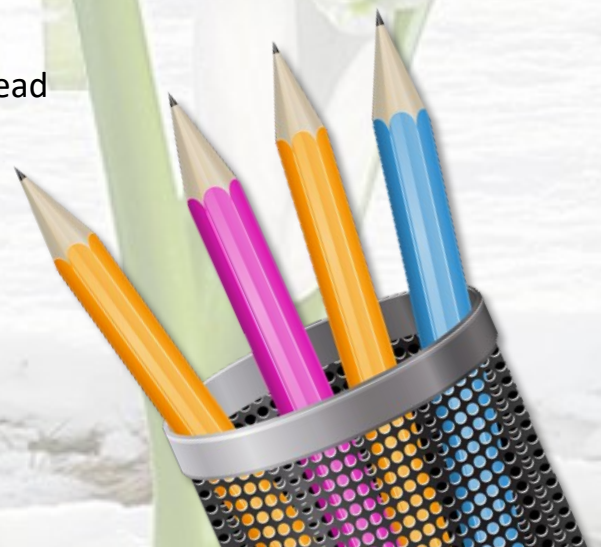
Next you need to decide where you will put your bird feeder. It needs to be high up, in a sheltered spot and out of the reach of cats. You can either put it over the end of a branch or hang it by a string loop.

ROLL A BIRD

See who can be the first to draw a bird in our dice game. You will need a dice, paper and pencils.

Take it in turns to roll a dice and then draw the part of the bird which the number says below. If you've already drawn that part then miss a go. The winner is the first one to draw a complete bird.

1. Body & head
2. Beak
3. Feet
4. Eyes
5. Wings
6. Tail



WE LOVE NATURE

Have a go at our Valentine's themed activities.

HEART ART

Make a hanging heart decoration. You will need some cardboard, scissors, found objects, glue and string.

First ask an adult to help cut out a cardboard heart. Next go for a walk to find special things to decorate it with (remember only to pick living things if you have permission). When you've finished collecting, use glue to stick the objects on to the heart, then tie a string loop to hang it up by.

Don't forget to take a picture and enter our competition to win an RSPB bird guide (see competition details below).



VALENTINES SCAVENGER HUNT

Go for a walk and see how many heart shaped things you can spot. Maybe a heart shaped stone, puddle, cloud or leaf. Try arranging sticks and leaves in to small heart shapes for other people to find.



WORDSEARCH

Can you find the words hidden in the wordsearch box?

FROST

PUDDLE

CATKIN

SEAL

BUDS

BADGER



How do we know the ocean is friendly?

It waves!

How do you get a squirrel to like you?

Act like a nut!



Well done to:

Emmeline (Age 11)

who won a pair of RSPB binoculars in our Christmas decoration competition.

Well done to:

Jasmine (Age 12)

who won a camera trap in our Celebrate the Dour competition.

WHAT DO BIRDS EAT IN THE WINTER?

In the cold weather there are fewer insects to eat but there are still some fruits and seeds for the birds to munch on.

All of the fruits and seeds below were found by Ranger Paul S at Coombe Hole, Fort Bugoyne. See if you can spot any of them in your local area and maybe even see some birds having their dinner!



COOMBE HOLE, FORT BURGOYNE WINTER MENU



Teasel seeds. Look out for these tall spiky plants whose seeds are eaten by goldfinches using their pointed beaks.



Sloe berries grow on blackthorn trees. Hawfinches like to eat them and use their powerful beaks to crack open and eat the seeds.



Holly berries only grow on female trees which is why not every tree has berries. The berries are eaten late in the winter by birds such as song thrush.



Rose hips are full of healthy vitamins and are eaten by lots of birds including blue tits.



Haws are the berries on hawthorn trees. The seeds inside them are poisonous to us but not to birds, like blackbirds, which love them.



WILDLIFE NEWS

WHAT'S BLACK AND WHITE...?

Can you guess what Rangers Matt and Mel have found at one of our sites... black and white hairs, big holes in the ground, paw prints...? That's right, badgers!

Badgers like to live in woods or at the edge of fields and eat all sorts of things, especially worms.

February is when baby badgers, called cubs, are born. Look out for large holes with dried grass outside, this is actually the badger's bedding, which the parents put outside once it's dirty.



A badger's paw print has 5 toe prints with 5 claw marks.



SEAL SPOTTING

A baby seal, called a pup, was found on Samphire Hoe beach in January. The pup, which probably got lost from its mum, was taken away to be looked after. It was a grey seal pup, which is the largest of our two seal species. You can look for common seals and grey seals off the coast if you visit us at Samphire Hoe, Greatstone Dunes and Dungeness.



POND DRAGONS

Ranger Steff has been busy helping to create ponds for great crested newts. These amphibians need ponds to lay their eggs in each spring. The male newts have an impressive crest and are thought to look like mini dragons.

RAIN, RAIN, RAIN

The Drellingore is flowing in the Alkham valley. It is part of the River Dour which can only be seen when the groundwater is very high. This used to only happen every 7 years but now happens more often as climate change means our winters are wetter. Fast flowing rivers can make it harder for trout eggs and fry (baby trout) to survive. Hopefully they have lots of underwater vegetation in the River Dour to keep safe in.



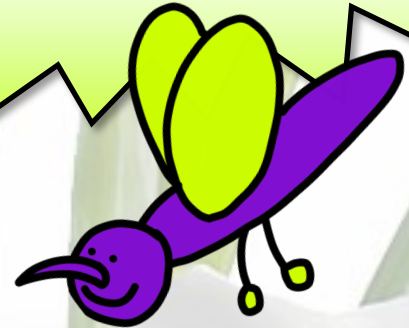
JUNIOR RANGERS NEWS GET SNAPPING

Junior Rangers can take photos of their Tweet Treat bird feeder, hanging heart decoration or Valentines scavenger hunt to work towards their next badge. Just email your photos to wccp@dover.gov.uk

Thank you to the Junior Rangers who sent in pictures of their completed Christmas Green Gang activities.



'Do you have any photos or stories to share or a question for the Rangers? If so get in touch!
Email: wccp@dover.gov.uk



JOIN THE JUNIOR RANGERS

JOIN THE HUNDREDS OF LOCAL JUNIOR RANGERS!

The Junior Rangers take a closer look at wildlife & ecology by taking part in WCCP & RMCP events and activities.



It only costs £5 to join and by completing activities or attending events you progress through the levels from Junior Ranger (5 events) to Peregrine (40 events) earning badges, certificates and wildlife themed prizes along the way.

To join please email wccp@dover.gov.uk

COMPETITION

WIN AN RSPB BIRD GUIDE!

We're giving away an RSPB bird guide in our valentine themed competition. To enter email a picture of your Heart Art decoration to wccp@dover.gov.uk. Closing date: 28th February 2020. See T&Cs below



LOVE YOUR PLANET

What can you do this holiday to help the planet?

Put up a nestbox for the birds!

National Nestbox Week runs from the 14th—21st February and aims to put the spotlight on breeding birds. Check out www.nestboxweek.com for advice on buying or making a nestbox, where to place it and which birds like which box. If you don't have a garden or wall to hang one on, ask your school or local community garden if they would like a nestbox.

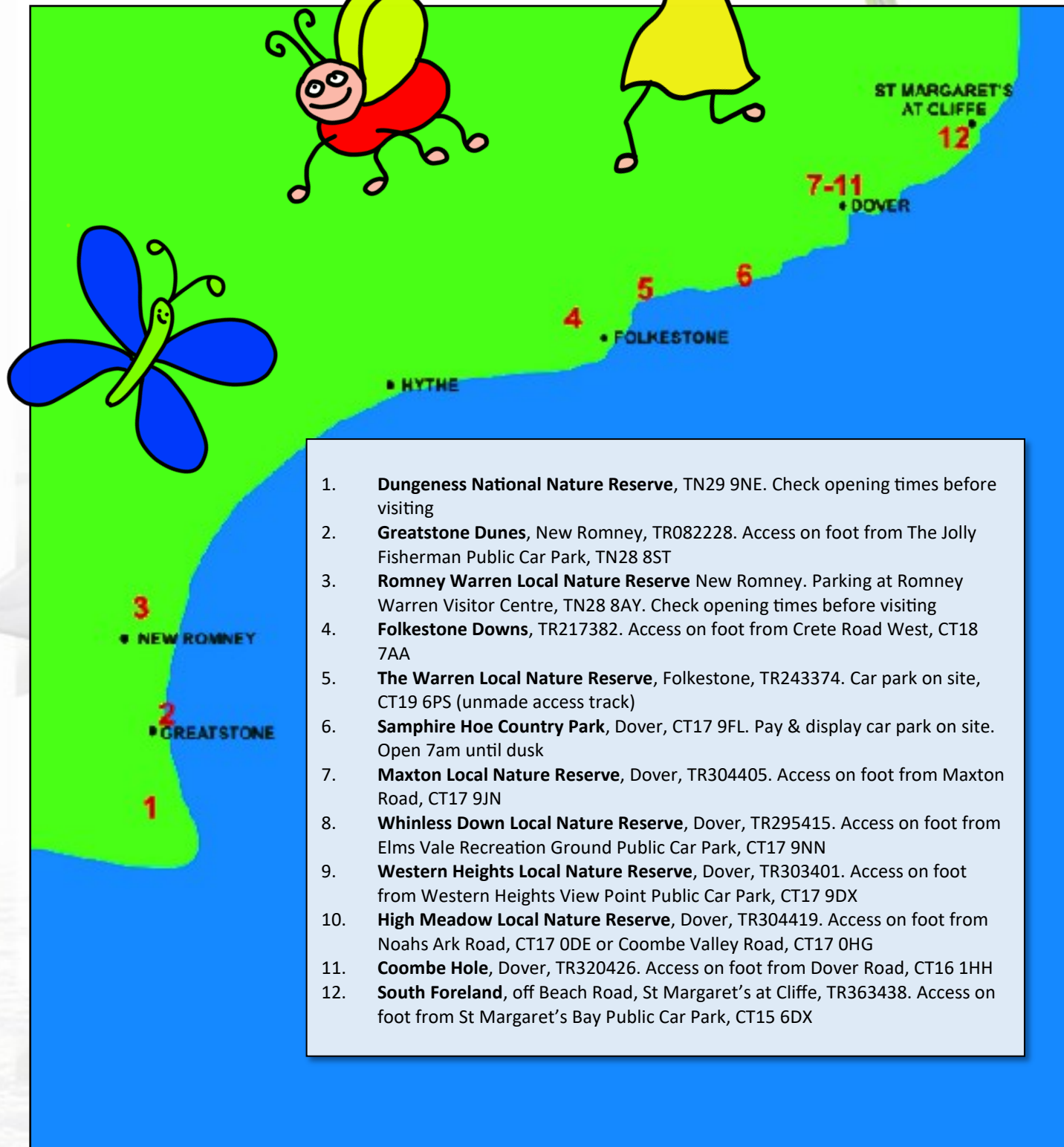
Let's find more homes for birds

Competition Terms and Conditions: Under 18's only. By entering, your entry and name may be used on social media unless you request otherwise. Entries will be judged by WCCP & RMCP staff. The winner will be notified by email within 14 days of the closing date. Where possible prizes will be posted within 28 days of the closing date, this may be longer if ordered direct from third parties. Prizes posted to mainland UK only.



VISIT OUR SITES

WCCP & RMCP manage sites from Romney Marsh to Dover which you can visit. Please park considerately and follow the countryside code.



Follow us
#GreenGangAtHome

