



The Open is golf's original championship. Played since 1860 on iconic links golf courses, it is the sport's most international major championship with qualifying events on every continent. For one week each year, the pursuit of the famous Claret Jug trophy is the focus of the sporting world, followed globally by millions of fans.

The 149th Open will be played at Royal St George's from 12-19 July 2020, marking the 15th time that the Championship has been staged there. The Open was last staged at Royal St George's in 2011 when Darren Clarke of Northern Ireland won his first major title. Founded in 1887 by Dr William Laidlaw Purves, Royal St George's is consistently ranked amongst the leading courses in the world. The club occupies a unique place in the history of golf, for it was here in 1894, that The Open was first played outside Scotland.

The R&A is aiming to invest £200 million in developing golf over the next decade and supports the growth of the sport internationally, including the development and management of sustainable golf facilities.

The R&A, through R&A Rules Ltd, governs the sport worldwide, outside of the United States and Mexico, on behalf of over 36 million golfers in 143 countries and with the consent of 156 organisations from amateur and professional golf.

Staged by The R&A, The Open delivers an annual economic benefit of up to £100 million to its host region, while the Championship's commercial success supports the development of the game, worldwide.

The R&A also has responsibility for running a series of world class amateur events and international matches in women's and girls' as well as men's and boys' golf. The R&A works with IMG to stage the AIG Women's British Open and with the European Tour to stage The Senior Open presented by Rolex.



TheOpen.com – randa.org



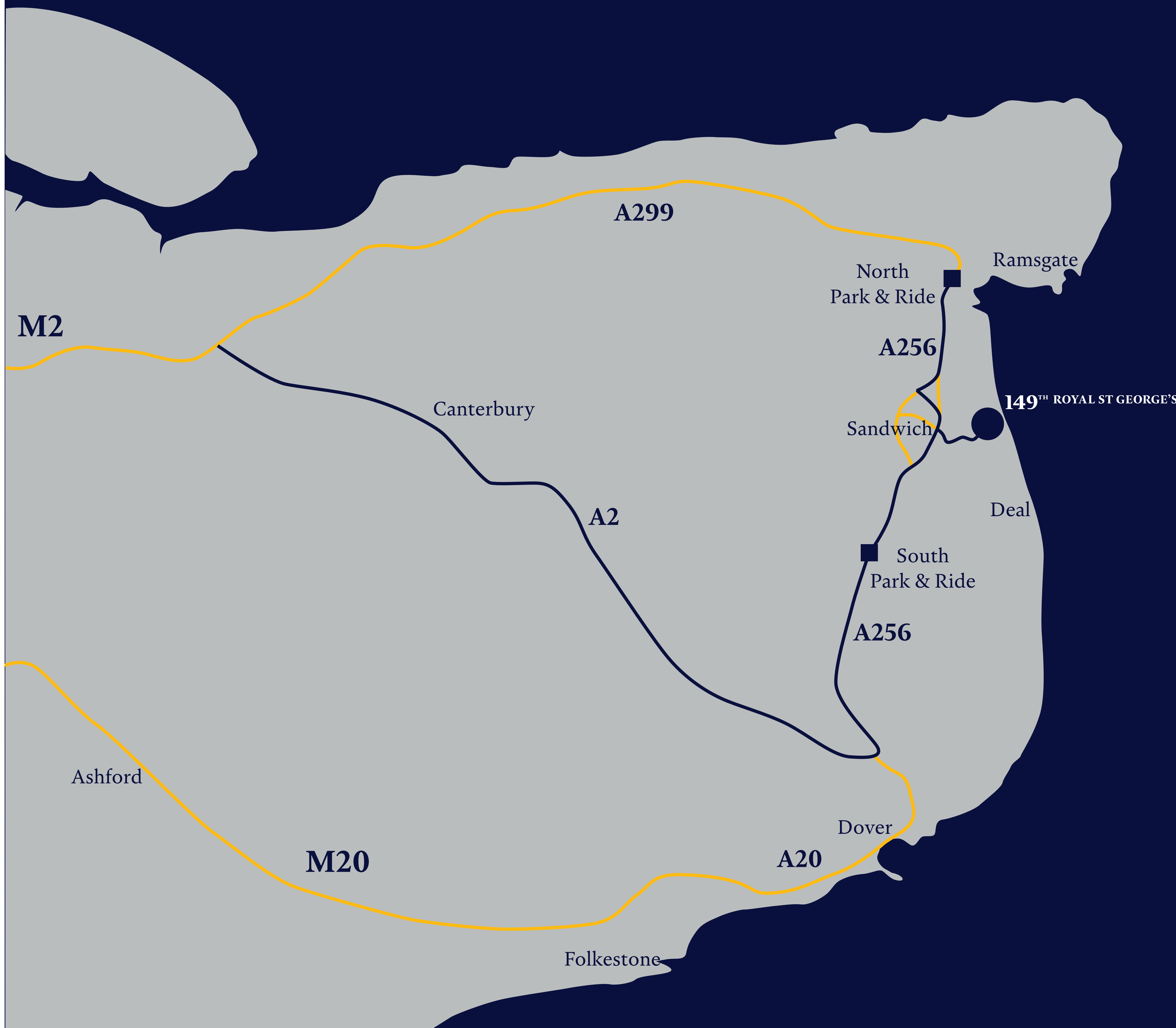
There were challenges during the last Open held in 2011 but apart from the weather, which sadly we cannot control, we are working together with all parties to ensure our plans and contingencies for 2020 work for the benefit of the event but respect the needs and desires of the local community

Previous Issues	Plan for 2020
Sandwich Station - Frequency of level crossing closures due to train car sizes	Station improvements, including platform extensions, to allow for 12 car set trains from London
Traffic route congestion during The Open	A comprehensive transport plan has been devised to reduce the number of cars parked locally to the venue by creating a number of Park & Ride sites for spectators, and provide a dedicated walking route from the train station to the course to alleviate congestion on roads in Sandwich
Residents' parking and access for surrounding villages	Temporary parking restrictions and road closures incorporated into the traffic plan to support traffic flow and access for the town and surrounding villages
Benefits for Sandwich	A local communities and business sub-group has been set up with early engagement to raise awareness of the plans, and promote opportunities associated with the Championship
Poor travel experience for spectators visiting the Championship	Improvements made through Sandwich station, increased number of Park and Ride sites and dedicated walking routes all seek to improve the spectator experience for 2020 and future Open Championships
HGV congestion in Sandwich throughout the build and de-rig periods	To manage all large HGV movements during the build and de-rig phases all deliveries will report off-site away from Sandwich before being called forward to the venue via dedicated routes when they are ready to be received

Planning for the next Open Championship at Royal St George's began soon after 2011. A number of agencies have been working closely to provide a transport plan that suits the needs of the Championship, its visiting spectators and local businesses and residents. A few of the measures that have been incorporated in the latest plan include:

- Investment in Sandwich rail station plus a dedicated walking route to the course to support additional spectators travelling by train
- The use of multiple park and ride sites to minimise event traffic on the roads in and around Sandwich town
- Temporary Traffic Restrictions to be in place to aid traffic flows to and from The Open
- Temporary Parking restrictions on key roads to support traffic flow for spectators and local residents





As part of improving the transport plan for The Open, we have sought to reduce traffic congestion in and around Sandwich town. We will achieve this by:

- Providing more park and ride sites to the North and South of Sandwich Town
- Creating capacity for circa 10,000 cars
- Reducing the number of cars parked locally to the venue by 50% compared to 2011
- Maintaining Ash Road as a local access route with no Championship traffic signposted in this direction to allow local residents and businesses to go about their day with as little disruption as possible



Whilst hosting a global event of this nature will inevitably mean greater traffic in the local area, the Transport Group is committed to minimising disruption to local businesses and residents. Some of the areas that have been reviewed to assist this are as follows:

- Local traffic advised to use Ash Road and Woodnesborough Road to avoid event traffic
- The level crossing at Sandwich station will be lowered more frequently than normal (but less than in 2011) in order to facilitate the altered timetable.
- Parking restrictions on the main routes to and from the course (and adjacent residential roads) will be in place to support traffic flows and prevent on-street parking by spectators
- The Ancient Highway will be 'tidal-flow' between Deal and Sandwich. It will be one-way northbound for inbound traffic (likely 6.00am-2.00pm) and will become one-way southbound for exiting traffic (likely 2.00pm-10.00pm).
- Temporary traffic control points will be implemented, with dedicated traffic officers deployed to direct traffic
- More detailed information on exact restrictions and routes will be available to the public during Spring 2020

----- Ancient Highway – Tidal Flow
6.00am – 2.00pm Northbound
2.00pm – 10.00pm Southbound

————— Recommended Routes for local Traffic

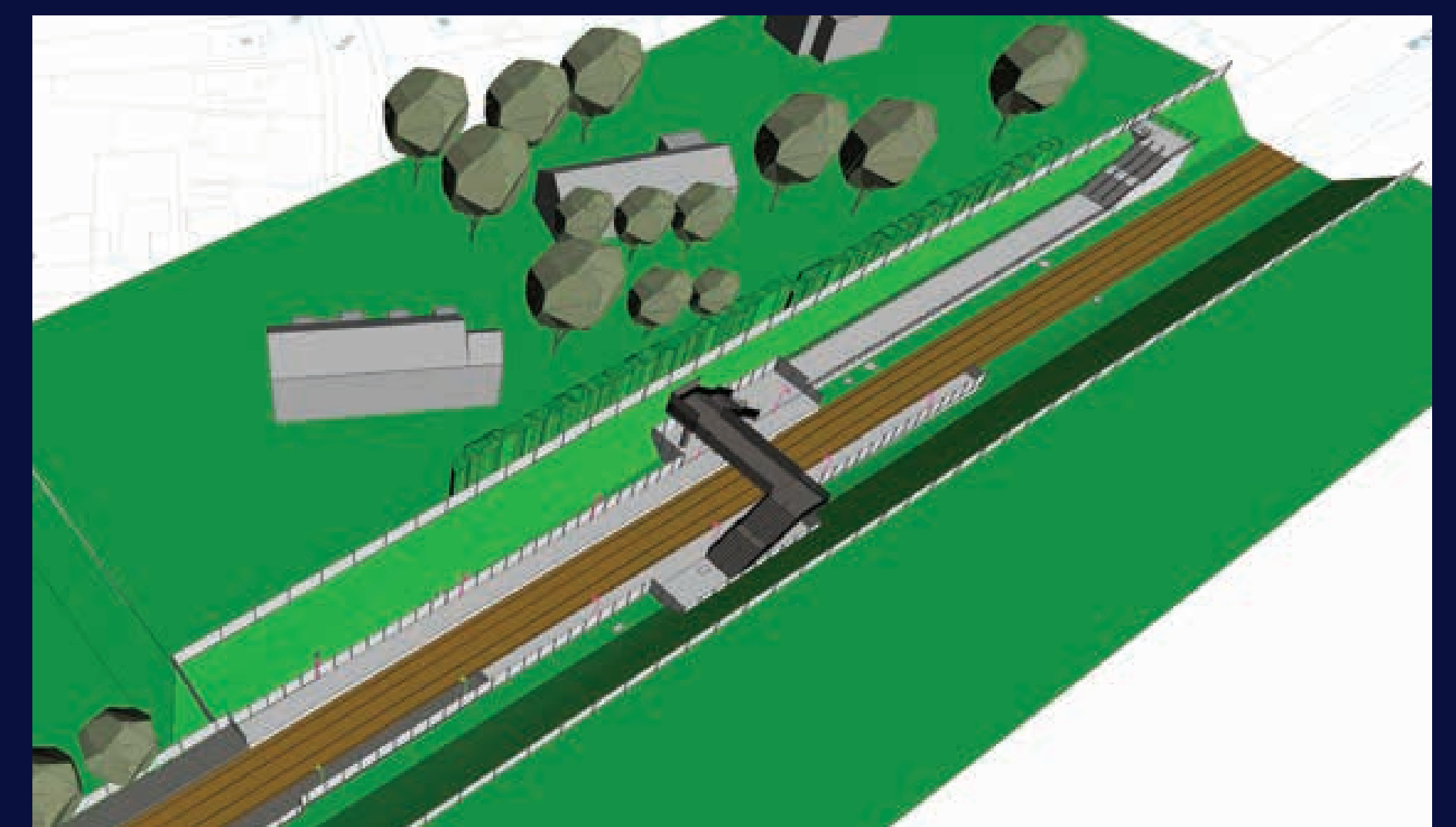
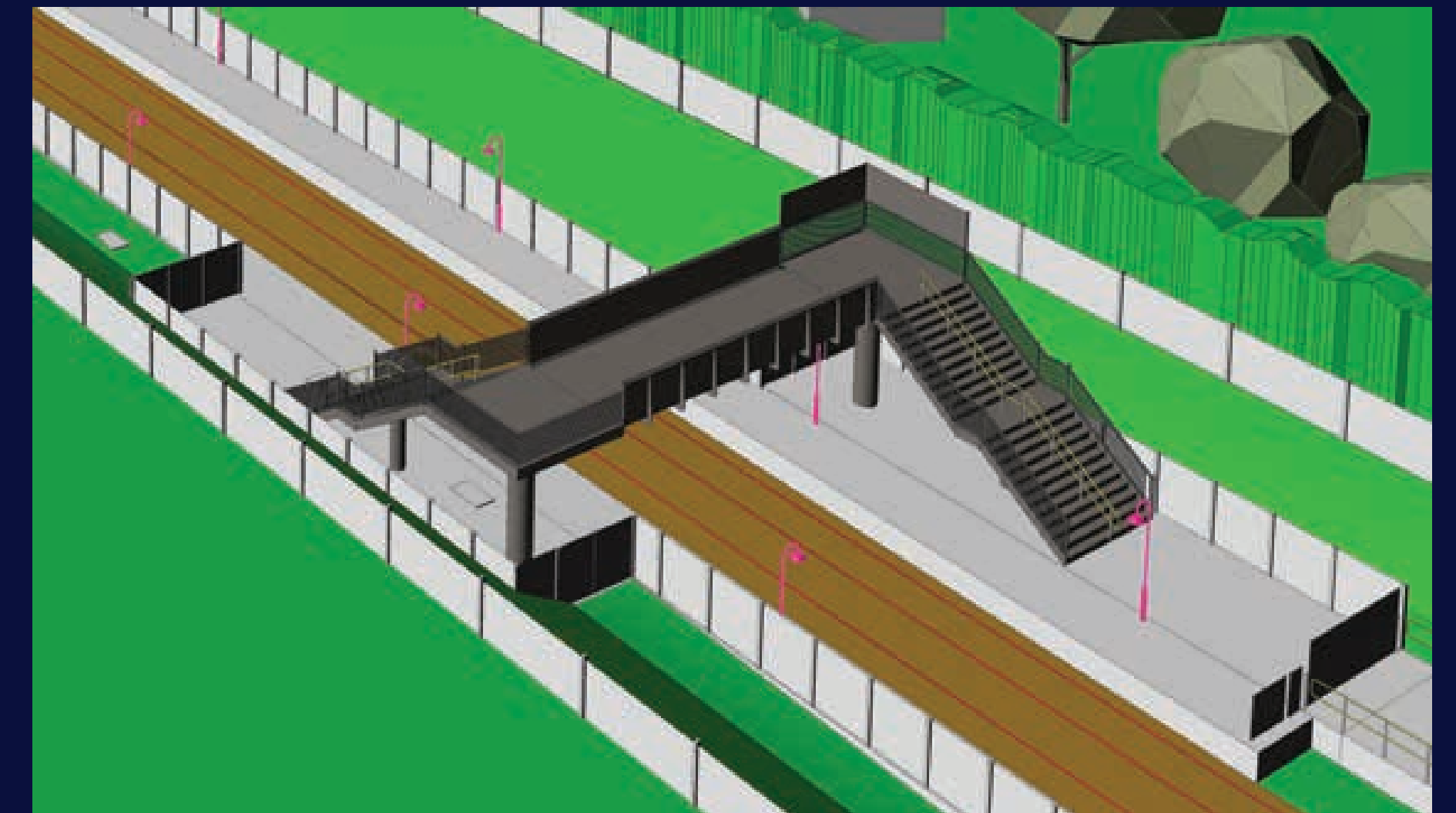
————— Park & Ride Bus Routes

How we are preparing the railway for The Open

We are expecting around 15,000 spectators to travel to Sandwich by train on the busiest days of the championship.

We are upgrading the station ahead of The Open to accommodate these extra passengers by:

- **Building platform extensions**
Allowing 12-car trains to stop without blocking the level crossing on Dover Road
- **Installing a new footbridge**
The new bridge will allow passengers to cross between platforms at the eastern end of the station
- **Creating a new pedestrian walkway**
So spectators can walk to The Open without using St George's Road
- **Creating a new pedestrian entrance**
Next to the new platform extension a new entrance and queuing space will be created for passengers boarding and alighting trains



All of the construction work will be finished ahead of The Open

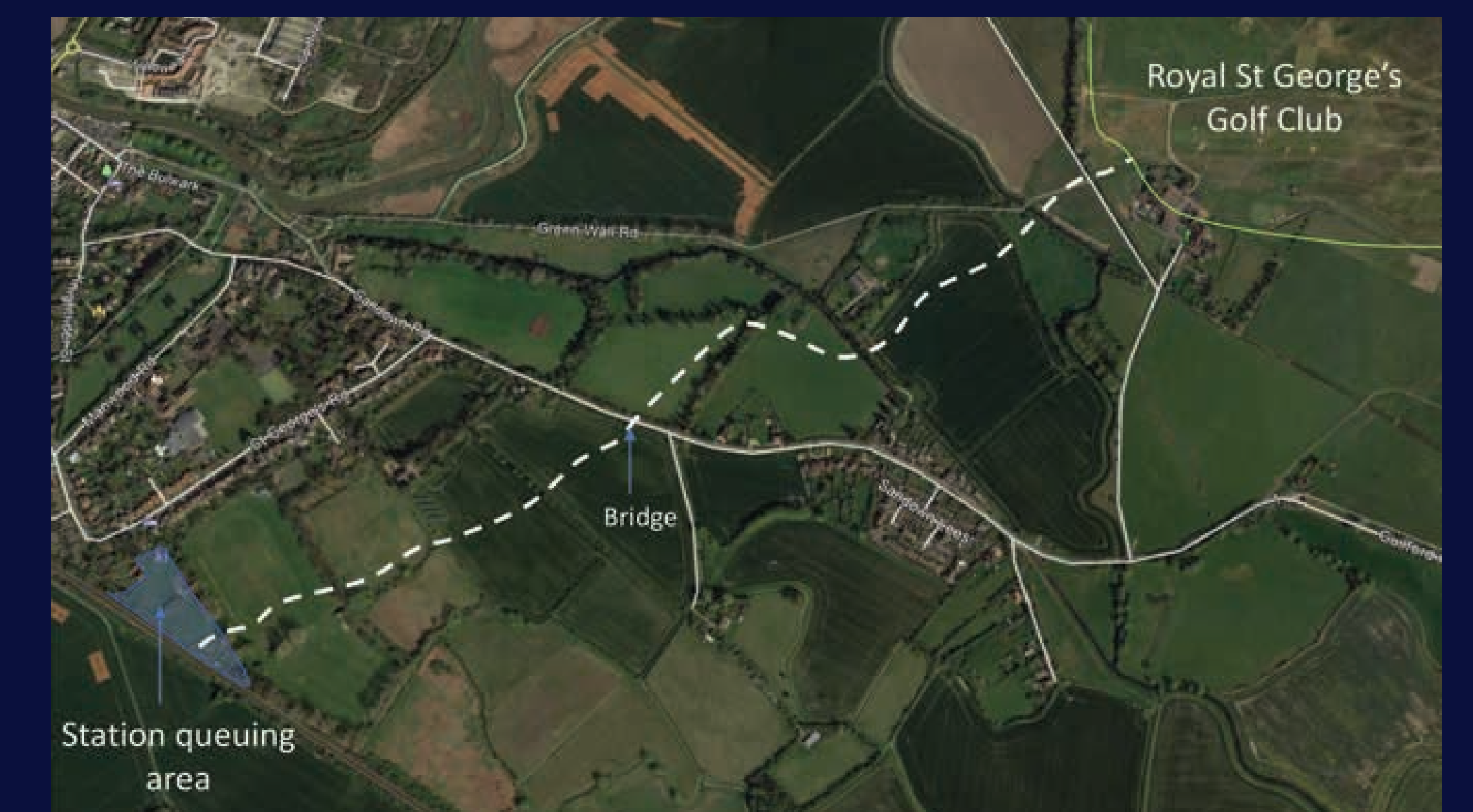


What will happen during The Open?

We are expecting a large number of spectators to travel to The Open by train. Morning services to Sandwich and afternoon services towards London are likely to be very busy.

To accommodate these extra passengers, we will need to make some changes:

- Amended timetable**
 We will publish any changes well in advance of the Championship
- Longer and more frequent trains**
 To provide extra capacity for passengers travelling to or from The Open
- Crowd management**
 We will have dedicated staff to provide train information, directions, and help make sure the station doesn't become overcrowded. There will also be a queuing system in the field east of St George's Road, where spectators can wait before boarding trains





How will this benefit Sandwich?

We know that Sandwich will be much busier during The Open, and our plans aim to reduce the potential disruption for local residents by:

- **Reducing traffic congestion**
We are extending the platforms so longer trains can call at the station without blocking the level crossing and causing traffic congestion on local roads
- **Better experience for passengers**
We will provide longer trains, an amended timetable, extra space on longer platforms and an additional entrance to the station. Our aim is to ensure spectators visiting Sandwich by train have a great experience
- **Less disruption for residents**
We are installing a new pedestrian walkway, and our crowd management arrangements will mean spectators won't need to use Delfside and St. George's Road to get to the venue
- **Prepared for future events**
The improvements we are making to Sandwich station will mean it is well-prepared for any future Open Championships held at Royal St. George's. The platform extensions, additional footbridge and pedestrian walkway will only be used during major events

Each year, The Open delivers an annual economic benefit of up to £100 million to its host region, while the Championship's commercial success supports the development of the game, worldwide.

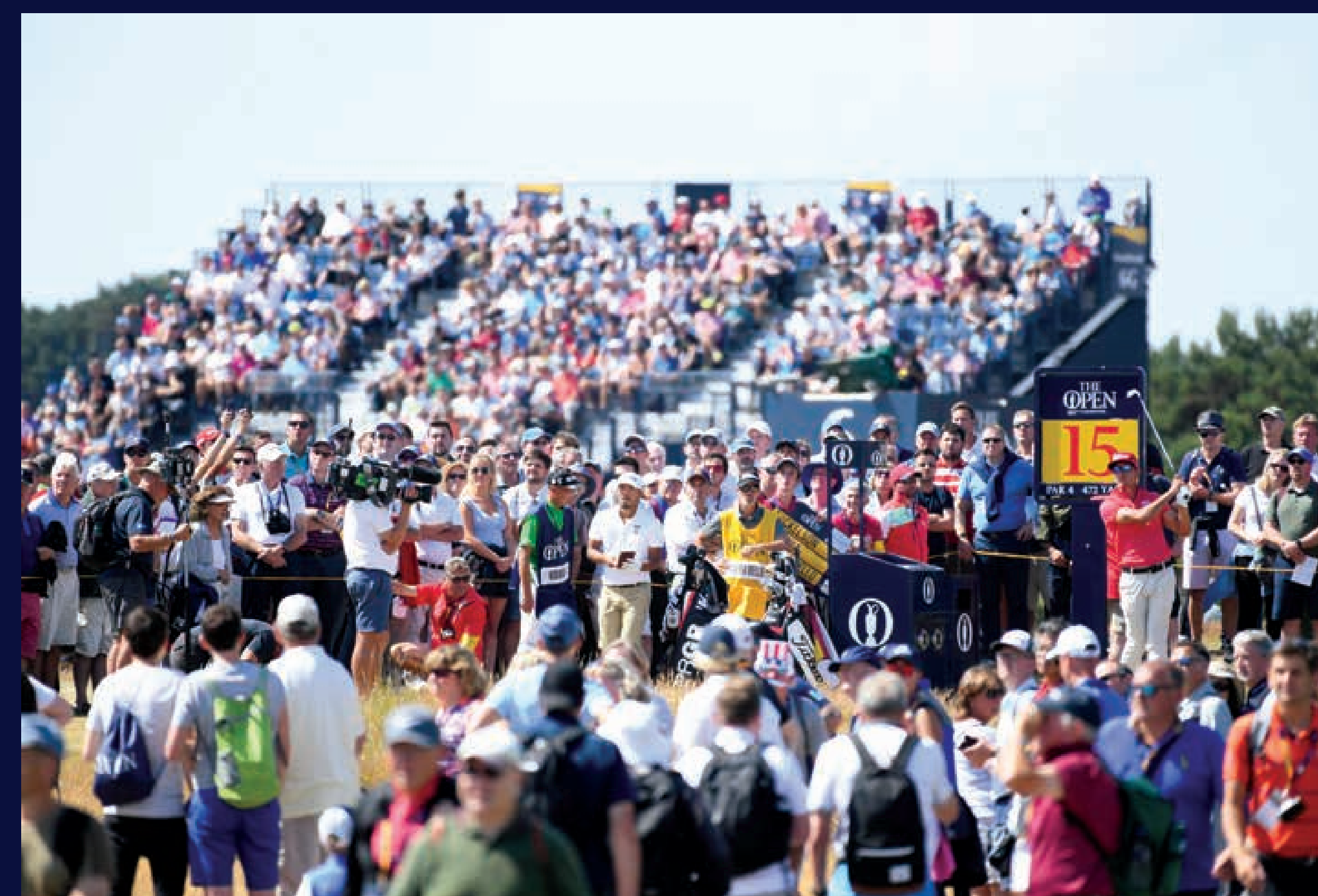
In 2011, the Sport Industry Research Centre found that £24m of new money was generated by The Open in the Kent economy.

In 2020, the Championship week impact for Kent is forecast to rise to £30m of local spending by visitors to Kent, while 100 million people watching The Open on television around the world will generate a tourism marketing benefit for Kent worth more than £50m.

Independent research at The Open indicates that two-thirds of spectators will return to the host venue for a leisure visit within twelve months.

In addition to the above there is of course the economic impact of all the staff working on the build and de-rig of the Championship as well as the increased number of golfers visiting the area in the years and months leading up to and after The Open.

The R&A also provides a local legacy fund to local community groups and initiatives via The Open Legacy Fund. The funding supports projects and programmes that will have a positive and lasting impact in the local communities in which The Open is staged and often involves social and environmental themes.



Southport Pier Improvement project 2017



	2019								2020							
	May	Jun	Jul	Aug	Sep	Oct	Nov	Dec	Jan	Feb	Mar	Apr	May	Jun	Jul	Aug
Community Drop in Sessions																
Transport Group Meetings																
Sandwich Station Upgrade																
The Open Build and Derig																
The 149 th Open																

Frequently Asked Questions

When is the Championship held and where?	Royal St Georges Golf Club, Sandwich, 12 th – 19 th July 2020 (Practice days: Sunday – Wednesday) (Championship Days: Thursday - Sunday)
When will tickets go on sale and how much are they?	Hospitality packages are now available and general admission tickets will go on sale in July 2019. To find out further information or to register with The One Club please visit TheOpen.com for priority access to tickets
How do I get there?	You can travel via train and take the walking route to the course or use one of the park and ride sites. There will be additional provision for those who require special assistance. Further travel information will be available at TheOpen.com as plans are confirmed.
Will this affect me going about my daily business?	The local traffic plan is being developed to keep key areas of the town free flowing and to allow all residents and businesses to go about their daily activities as usual with as little disruption as possible.
Will my refuse collection/ street cleansing be affected?	If your collection day falls on a Championship Day, collections may be made earlier in the day or on an alternative day, however all residents will be informed of any changes prior to the event. Enhanced street cleansing will be carried out during the event.
Will the local schools be closed?	Both Sir Roger Manwood's School and Sandwich Technology School will be closed, however primary schools will remain open during the event. Headteachers will be provided with information about the local traffic plan to share with parents and carers in due course.
How can I keep updated?	There is information on the Dover District Council website which is updated regularly, alternatively, you can sign up for 'Keep me posted' which can be tailored to your choice of updates on all events or issues within the district. Press releases will be issued for all drop in events or consultations.
Will I be issued a residents' permit or have restricted parking?	As the transport plan develops further, detail as to which roads will require permits or will have parking restrictions will be made available. Householders will be contacted individually by letter during the spring of 2020.
Will the shops have extended opening hours?	This will be down to each individual shop to decide and update their opening hours accordingly.
Can I rent my property?	You are welcome to sign up to a letting agent to advertise your property. You can sign up to the official Open Accommodation website by visiting stayatTheOpen.com