

## Dover Fastrack Newsletter #9

### IMPORTANT INFORMATION

#### Drop-In sessions:

#### 2022

Wednesday 30<sup>th</sup> November  
Wednesday 14<sup>th</sup> December

#### 2023

Wednesday 25<sup>th</sup> January

#### Location:

Colas Site Office, off Tesco Roundabout, Honeywood Parkway, CT16 3PS.

#### Time:

12 noon to 2pm

**Tel:** 07799 835379

#### Emergency Breakdown Tel:

07974 617256

01304 828677 (22/11/2022 onwards)

#### Email:

[PLODoverFT@colas.co.uk](mailto:PLODoverFT@colas.co.uk)

#### Twitter:

@ColasDoverFT

#### Website:

[www.dover.gov.uk](http://www.dover.gov.uk)  
[www.kent.gov.uk](http://www.kent.gov.uk)

For those of you who have been able to attend our monthly drop-in sessions you will have had the opportunity to meet some of the Colas team, the Council officers and ask questions about the Fastrack Project. For those who haven't been able to join us we would like to respond to a question about why are we building Dover Fastrack?

Dover District Council's Core Strategy (2010) sets out the planning framework to guide the future development of Dover district up to 2026 and established the principle for the Fastrack scheme, to mitigate traffic impacts of development. The £22.9m project will provide an express bus service linking the new developments at Whitfield and Connaught Barracks to the town centre and Dover Priory railway station. The route will provide 2.1 km of new road with pedestrian and cycle facilities. The project will provide Dover's first zero emission bus service and a sustainable transport solution to support local housing growth. Provisionally the route will be identified as Fastrack Route D.

### Section 1 – Honeywood Parkway over A2

#### What has been happening

Since our last newsletter we have started the installation of the soakaway tanks. The soakaway tanks allow for the surface water from the road to slowly soak into the natural chalk.



*Aerial view of the new entrance and excavation of the soakaway tanks*

We have completed the piling mat in readiness for the installation of the piled foundations for the bridge and widened the site entrance along the A2. Through night closures we cleared the verges of vegetation. We have also completed the slew of the Vodafone and BT cables along the verge of the A2 by the Dover District Council offices to move them away from the location of the bridge foundation.

### Looking ahead

Over the next month we will continue with the drainage installation, installing pipes and inspection chambers in Section 1 A2 North. We will also start to import the fill material that will be used to build the embankment in this area.

At the bridge site we will be installing a test pile ahead of installing the piles for the bridge foundations, along with the backfilling of the verge above the slewed Vodafone and BT cables along the A2 South verge.

**Section 1 Fact Find**  
864 individual plastic crates are installed for just two of the soakaway tanks in Section 1 A2 North.

### Section 2 - B&Q Roundabout to Dover Road and the Dover Road Tie-In

#### What has been happening

The ongoing road closure on Dover Road has enabled us to commence our works at the junction of Dover Road tie in. Our first task was to expose the live utility services using vacuum excavators and we will then lower those services that sit within our required excavation of the road.



*Vacuum Excavator on Dover Road*



*Exposing live services at the end of Section b adjacent to Dover Road*

The drilling for the deep bore soakaways to allow surface water to discharge into the underlying chalk has been completed and associated drainage installation works are progressing well. We have also commenced the installation of street lighting columns.

#### Looking ahead

We will be continuing the remaining drainage installation and building the junction where the new road meets Dover Road. The remaining street lighting columns will be installed, and the site boundary will begin to have timber post and rail fencing installed in the areas available.

**Section 2 Fact Find**  
Vacuum excavation is the safest way to expose live utility services. In good, soft ground conditions and depending on the depth of the utility service you need to expose, a vacuum excavator can expose up to 10 linear metres per day.

## Section 3 – Dover Road

### Looking ahead

Section 3 will be revisited in the new year to complete the widening works and diversion of a gas main north of Burgoyne Heights, to install the new bus layby located behind Guston Primary School and to resurface the road in the areas of widening. Updates will be provided to affected residents and stakeholders once the programme for this work has been finalised.

### Noise, Vibration, Dust monitoring

Noise and Vibration monitoring has been setup within the sections. These provide constant readings which are monitored by Colas to ensure works are undertaken within permitted levels.

### Social Value

We have donated chairs to Tersons Estate Agent, who placed them in the care of Future Foundry, a “social enterprise who help young people to grow sustainable businesses and events” (Future Foundry). The chairs are now used in the Future Foundry’s space in the Charlton Centre where they meet to give young people the “confidence and the facility to develop their crafting, making and entrepreneurial” skills. They are currently making 800 lanterns for the Dover Winter Light up on the 03 December 2022.

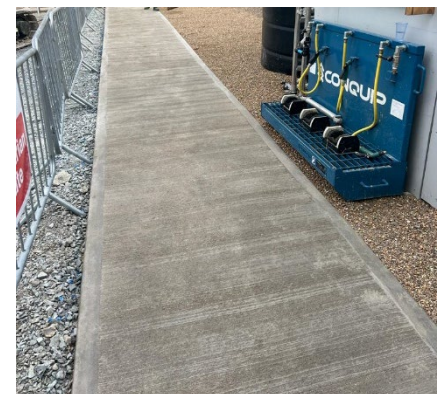
We also donated chairs to Age Concern Sandwich for their Welcome Warm initiative, where they use their centre to welcome anyone for a place to sit and stay warm. Our donation will help them to accommodate more people at the centre.

For schools in the local area, we will be providing talks both at primary and secondary level that will cover a range of topics including health and safety and the variety of roles within construction.

### Looking Ahead for Mud



In anticipation of the colder and wetter months, we have created a section of road on our site just off the A2 (as seen left) that can accommodate deliveries and large vehicles. The section we have so far completed in the photo will be extended further into our site. This not only ensures the safety of road users on the A2 but will also allow for vehicle washing before they re-join the A2, stopping any mud or debris from following them.



We have also installed boot washes (as seen right) on our main compound to stop mud leaving on the feet of our employees and to help prevent slips, trips, and falls.



## Traffic Management

### Section 1 Tesco Roundabout to Whitfield

Narrow lanes traffic management remains in place with reduced speed limit installed on the A2 between the A256 Interchange and the A2 Whitfield Roundabout both east and westbound until June 2023.

Emergency Free Breakdown Recovery is available within the narrow lane section on the A2 via a dedicated 24hr Traffic Safety and Control Officer number on **07974 617256**. Please note from Tuesday 22 November the number to contact is **01304 828677**

We have completed vegetation clearance and tree cutting either side of the Colas site entrance on the A2 to improve visibility and sight lines.

### Section 2 Dover Road widening

A full gated road closure of Dover Road highlighted in red on the plan overleaf is in place, diverting traffic via The Lane, A258 Deal Road/Castle Hill Road for access to Guston. We have undertaken some pothole filling on the lane to assist with vehicle access. Signs and barriers will be visible at each side of the closure and throughout the diversion. A pedestrian walkway will be in place for the duration of the closure, along the edge of the Duke of York fence line. The Chance Inn remains open for business, opening Wednesday to Sunday, 12-10pm.

These works will continue **from 7am 31<sup>st</sup> October to 5.30pm 11<sup>th</sup> December**. With the current closure at the junction of Dover Road tie in with the new road we are proposing to open Dover Road with two-way traffic signals, when possible, over weekends subject to programme works to help the residents and businesses in the local area. This will be communicated by Colas via Guston Parish Council and the Colas Twitter feed on a weekly basis until the closure is removed, which is currently planned for 11 December.

In case of a Traffic Management Emergency the dedicated Traffic Safety and Control Officer can be contacted on 07974 617256. Please note from Tuesday 22 November the number to contact is 01304 828677.

The closure is required for the safety of the public and workforce while the junction in Section 2 is constructed.

## Useful Contacts



**PLO Tel:** 07799 835379

**Emergency Breakdown Tel:** 07974 617256 **Note:** from the 22/11/22 Tel: 01304 828677



**Email :** [PLODoverFT@colas.co.uk](mailto:PLODoverFT@colas.co.uk)



**Twitter :** @ColasDoverFT



**Website :** [www.dover.gov.uk](http://www.dover.gov.uk) [www.kent.gov.uk](http://www.kent.gov.uk)

**Report a problem on a road or pavement:** <https://www.kent.gov.uk/roads-and-travel/report-a-problem>

### Diversion Route

