

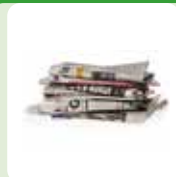
Fortnightly Paper & Card

Please remember:

- Place all paper and cardboard **loose in your box**
- Ensure all cardboard is **flattened and in manageable pieces**
- Put out for collection on the boundary of your property on your recycling collection day.



✓ Yes Please!



Newspapers



Magazines



Junk mail



Directories & Catalogues



Envelopes



Cardboard



Batteries:

We collect batteries for recycling as part of the recycling collection. **Please place your used batteries in a clear bag** and place them on top of your black box on your recycling collection day.

Need more information?

On the web: www.dover.gov.uk/waste
www.facebook.com/doverdc
www.twitter.com/doverdc



recycle for Dover

recycle for Dover

Your recycling collections explained



Fortnightly Recycling



Please remember:

- Place recycling **loose** in your wheeled bin
- **Empty and rinse** containers
- **Plastics** - only bottles, food pots, tubs and trays can be recycled
- Put out on the boundary of your property by **7am** on your recycling collection day.

✓ Yes Please!



Food and Drinks cans



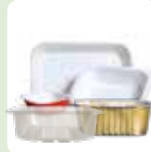
Kitchen foil



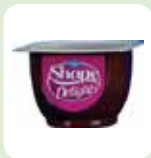
Empty Aerosol cans



Plastic bottles



Plastic and metal food trays



Yoghurt pots



Margarine tubs



Ice cream tubs



Glass bottles and jars



Drinks cartons

Weekly Food Waste



Please remember:

- Line your caddy with newspaper or compostable liners (**please do not use plastic bags!**)
- When it's full or you no longer want the contents in your kitchen, put the food waste in the **outside kerbside caddy**.
- Put the kerbside caddy out for collection **weekly** on both your refuse and your recycling collection days.



✓ Yes Please!



All food leftovers (including meat and fish)



Fruit and vegetables, raw and cooked



Any out of date food (including dairy products)



Bread, rice, pasta and beans



Meat and fish, raw and cooked including bones

